

AC 2009-1179: A LABVIEW-BASED ON-LINE ROBOTIC ARM FOR STUDENTS' LABORATORY

Olawale Akinwale, Obafemi Awolowo University, Ile-Ife, Nigeria

Lawrence Kehinde, Texas Southern University

Kayode P. Ayodele, Obafemi Awolowo University, Ile-Ife, Nigeria

A. M. Jubril, Obafemi Awolowo University, Ile-Ife, Nigeria

Olutola. P. Jonah, Obafemi Awolowo University, Ile-Ife, Nigeria

Soji Ilori, Obafemi Awolowo University, Ile-Ife, Nigeria

Xuemin Chen, Texas Southern University

A LABVIEW-BASED ON-LINE ROBOTIC ARM FOR STUDENTS' LABORATORY

Abstract

In this paper, the development of robotic arm experiments using the i-Lab Interactive Architecture is presented. Communication with the arm is done by using the RS-232 protocol. The robotic arm used in the laboratory has five degrees of freedom, each degree of freedom being controlled by a servomotor. The servomotors are controlled via pulse-width modulation (PWM), the width of each pulse being indicative of the position to which motor should move.

Three experiments are considered. The first experiment simply makes the robotic arm available to the student for direct control by moving different sliders. Each slider controls a motor. This would be the preliminary task to students who are new to robotics, and would familiarise them with the workings of the robotic arm. The second experiment demonstrates the effect of gravity on a robotic arm at different data rates. The third experiment developed entails requiring students to program the positions of each of the motors for each sequence stage of robot movements. Students would draw up this movement to perform an instructor-determined task. The instructor would require the students to, for example, pick an object from one location and place the object in another location.

The RA-01 robotic arm made by Images SI Inc. is used for these experiments and LabVIEW is used to create the laboratory clients and experiment engines. A visual feedback from the lab to the client is provided via a webcam.

I. Introduction

The field of robotics is largely unexplored by the underdeveloped and the developing countries. Few universities undergo course work in robotics and even fewer have labs for robotics. Yet, the field of robotics stands as one of the most promising of the future. The world is gearing up for the next level of automation where every device would be smart and able to do lots of things on their own without human input. The field of robotics holds front lines in these research areas with unmanned missions, explorations and excavations, home servant robots, robot playing sports and several other fields. With a dearth of robotics in the third world, the great brains in these parts of the world could be contributing more if only knew how to.

This research work reported here was prompted by the lack of laboratories and lectures in the field of robotics in the authors' environment. This research work aims to set up an online control engineering experimentation platform in the field of robotics. The aim was and is to expand the set of online experiments in the Control Engineering field while introducing newbies to robotics. The set of online experiments which this research work would put up are based on a robotic arm.

Three experiments have been set up at the Obafemi Awolowo University by this research effort. The experiments are:

1. A simple slider control experiment
2. An effect of gravity experiment
3. A trajectory planning experiment

II. Review

A lot of work has been done in the development of online laboratories (or weblabs). Below is an account of some of the developed labs in the field of Control Engineering.

At the University of Western Australia, a telerobot laboratory has been set up to enable students to practice kinematics¹. An online temperature control laboratory has also been set up². National Instrument's LabVIEW was used to develop their experiment engines.

At the University of Siena, an "Automatic Control Telelab (ACT)" has been developed³. In this laboratory, the user is required to design a controller for the experiment using MathWorks's Simulink. Experiments include the position control and speed control of a dc motor, level control and flow control of fluid in a tank, a magnetic levitation experiment, a helicopter simulation and control of a Lego robot.

Böhne et al⁴ reported the development of "Internet Assisted Laboratories (i-Labs)" in a cooperation between the Stanford Center for Innovations in Learning and the Learning Lab Lower Saxony within the Wallenberg Global Learning Network (WGLN). One of their experiments uses a Programmable Logic Controller (PLC) for the control of a process engineering plant.

A web-based laboratory for Control Engineering has been developed at the University of Bologna⁵. They implemented a rotary flexible joint, a ball and beam, a flexible link and a Furuta pendulum.

Bing Duan, Keck-Voon Ling and Habib Mir M. Hosseini of the School of Electrical and Electronic Engineering, Nanyang Technological University, Singapore have developed an online laboratory to perform the inverted pendulum experiment and a couple tank experiment^{6, 7}. The experimenter is required to design a controller for the experiment using state feedback. His input to the experiment setup is the controller gains: K1, K2, K3 and K4.

The work presented in this paper follows largely from the Telerobot laboratory developed by the University of Western Australia¹. Unlike the two-tiered architecture employed in the Telerobot lab, this work uses the three-tiered interactive architecture developed by the Massachusetts Institute of Technology^{8, 18}.

III. The Architecture of the Lab

1. The Three-Tiered iLab Architecture:

The laboratory which has been developed and reported in this paper was developed using the three-tiered architecture developed by the Massachusetts Institute of Technology (MIT) i-Lab research team. A second architecture is also possible, the two-tiered architecture. In the two-tiered architecture, there is a lab server and a client (forming the two tiers). This is shown in figure 1. In the three-tiered architecture however, a third tier is included between the lab server and the client. This third tier is called the Service Broker. In the two-tiered architecture, all authentications, user arbitration, database management and control of the laboratory equipment are handled by the laboratory server. In the three-tiered architecture however, the laboratory server is left solely with the responsibility of controlling the laboratory equipment. Hence, the lab server parses user requests (i.e. experiment specifications which the user sends in to the lab), executes requests which are deemed okay

and returns the results of the experiment. The Service Broker takes on the function of authenticating users, arbitrating the use of the laboratories and providing access to stored results from previous lab sessions. The Service Broker also determines what features of the laboratory each user has access to during his log-on session. For instance, a user classified as a student may be given access to one type of experiments only. Another person classified as an instructor may have access to the same experiment and also stored data from lab sessions of the students^{13, 14}. Figure 2 shows the three-tiered architecture.

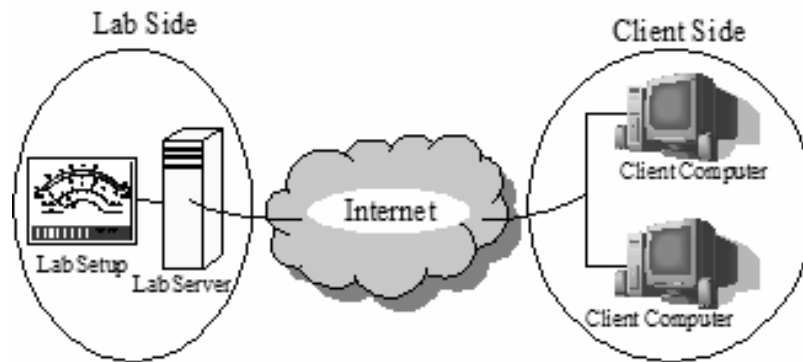


Figure 1 The two-tiered architecture

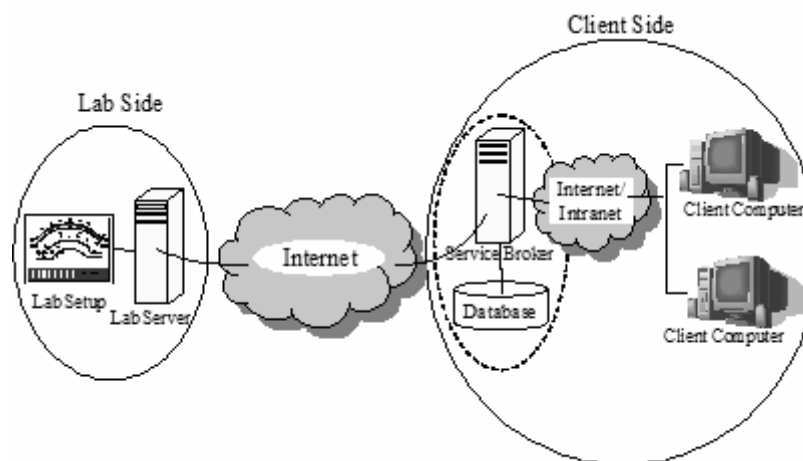


Figure 2: The Three-Tiered Architecture

The Service Broker may reside either on the laboratory side or on the client side (user side). The experiment engine (or experiment client) for each experiment resides on the laboratory server. Experiment clients can be implemented in several technologies: a Java applet, an ASP.NET application, a LabVIEW VI, and so on⁸.

Two types of Service Brokers have been developed by the MIT iLab team. The first handles batched experiments and the second handles interactive experiments.

The laboratory in this research work was set up using the Interactive components of the Merged Service Broker also developed by MIT instead of the batched components. A batched lab is one which accepts experiment specifications from the user and executes it whenever the lab is free and then returns the result to the user so that the user may not be online as at the time when the experiment is run and the result returned. (The service broker stores the result waiting for the user's next log on). Interactive labs, on the other hand, allot time blocks to

different users so that each user, in real time, is given access to the lab and control over the experiment parameters. The Merged Service Broker is a new Service Broker developed which combines the batched architecture and the interactive architecture in one. The interactive architecture was used for this work because of the nature of the experiments. Since the experiments involve the control of the motion robotic arm, it would make a lot more sense to have the control done in real time so that the user can immediately observe what changes to experiment parameters have on the robotic arm. The choice of the interactive architecture was also made because interactive labs give students a more realistic lab experience. Furthermore, feedback from students of the Obafemi Awolowo University who used the batched labs currently deployed at the university complained that performing the batched experiments, to them, felt like running the experiments using a simulation package like Multisim. There are currently three batched laboratories at the university: an operational amplifiers lab, a simple logic lab and an advanced digital electronics lab. All these were designed in-house.

In the Interactive Architecture for the three-tiered iLab systems, three other servers are included. These are the Laboratory Scheduling Server (LSS), a User Scheduling Server (USS) and the Experiments Storage Server (ESS). These three servers work with the Merged Service Broker to handle Interactive Experiments. Since the experiments are controlled in real time by the users, each user must have a scheduled time when he is given full control over the experiment parameters to perform the experiment. Two scheduling servers are used in the Interactive architecture: one which schedules the availability of the lab and which is set by the administrator of the lab and the other which schedules different users to make use of the lab. The reason there are two scheduling servers is to enable a user system e.g. a university which intends to use a laboratory developed and owned by another university to be able to independently schedule its different classes of lab users as it pleases using the USS, while the laboratory administrator at the remote end simply uses the LSS to schedule when the lab would be available to the user system.

It should be noted that in the three-tiered architecture, each of the servers can be located at the user's side, the lab's side or somewhere else geographically displaced from these two. Hence, figure 2 can be redrawn with the Service Broker on the lab side and the ESS and USS on the client side with the LSS on the lab side. Hence, the architecture is useable in diverse configurations.

2. LabVIEW:

LabVIEW is a virtual instrumentation software developed by National Instruments (NI). It is a programming environment in which programs are written graphically using the G language. It uses icons instead of lines of text to create applications⁹. Programs are developed by dragging blocks onto a front panel or a block diagram and connecting the various blocks together in the block diagram. Each program written in LabVIEW is called a Virtual Instrument (VI). The flow of data in the block diagram of each developed VI determines the execution of the program (of the VI). VIs created by LabVIEW are useful for test and measurement, data acquisition (DAQ), instrument control, data-logging, measurement analysis and report generation. Each VI comprises a Front Panel and a Block Diagram. The Front Panel is the user interface. The Block Diagram contains the graphical representation of functions which control the Front Panel objects¹⁰.

LabVIEW has a feature called Remote Panels and it uses this together with the LabVIEW web server to make it possible to access and control a LabVIEW Virtual Instrument (VI) over

the internet. The user wishing to access and control the VI would only need to have the requisite LabVIEW Runtime engine installed on his computer. LabVIEW was chosen to be used to create the lab client. LabVIEW is a graphical programming environment, and hence, the Front Panel of the LabVIEW VI developed serves as the GUI which the user interacts with and the Block Diagram of the VI serves as the experiment engine which parses and executes user input.

3. The RA-01 Robotic Arm:

The RA-01 robotic arm used for this laboratory is a product of Images SI Incorporated, New York. It is a robotic arm with five degrees of freedom. The base, shoulder, elbow and wrist joints are revolute joints. The gripper joint is a prismatic joint. The gripper servomotor is a rotary motor but the gripper mechanism converts the rotary motion into a translation. Figure 3 shows the RA-01 robotic arm.

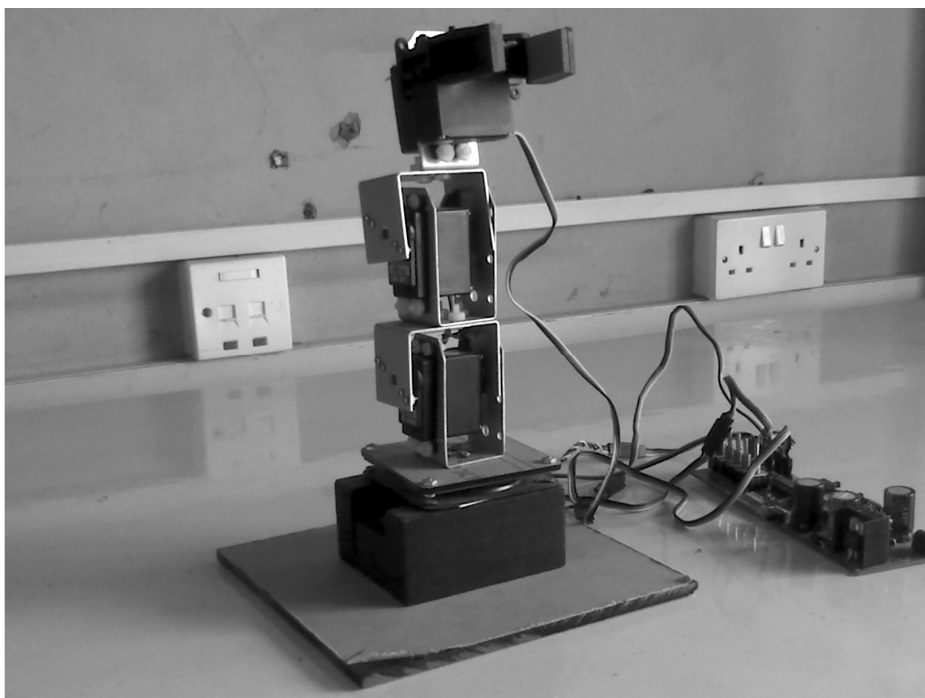


Figure 3: The RA-01 Robotic Arm

4. The Robotic Arm Laboratory:

Figure 4 shows the architecture of the developed robotic arm laboratory. The lab developed at the Obafemi Awolowo University has the USS and LSS installed on the Service Broker since for now, the only user system which exists consists of students from the university itself. With expansion of the lab, a USS and an ESS can be placed in each system of users' side.

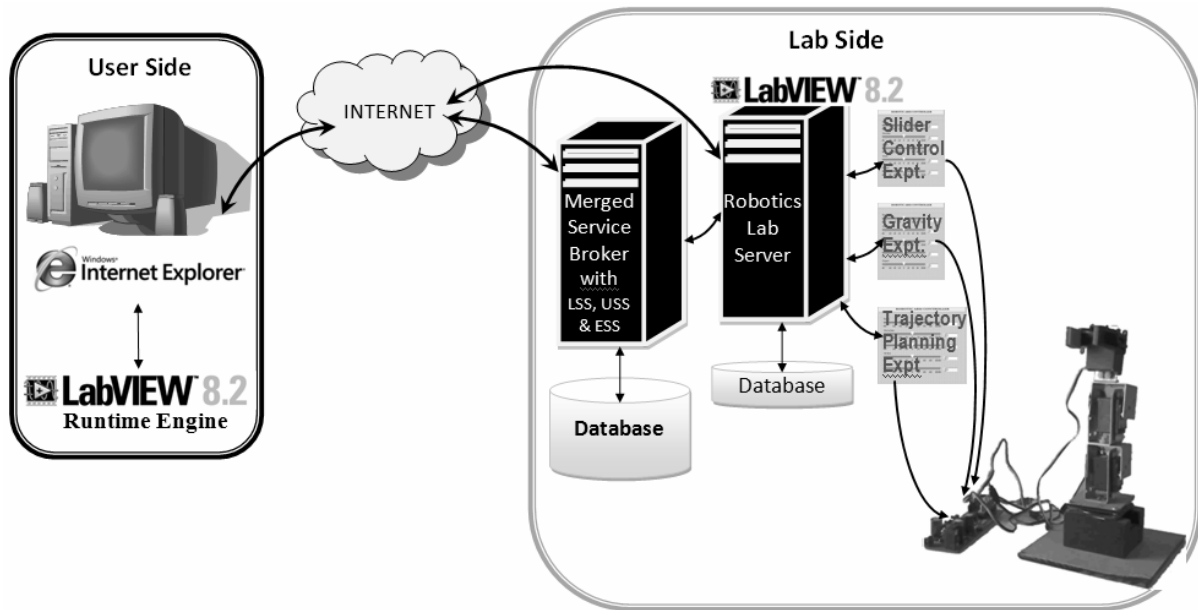


Figure 4: Architecture of Robotic Arm Laboratory

IV. The Experiments

1. Slider Control of the Robotic Arm:

This experiment is designed to give the lab user a feel of the workings of the robotic arm. Each of the servomotors (degrees of freedom (DOF)) of the robotic arm is controlled by a slider on the front panel of the LabVIEW VI. The user moves each slider to move each of the DOFs.

The LabVIEW VI was designed so that the user gives in the angular positions desired for each of the motors of the robotic arm. Each slider has variations from -90° through 0° to 90° . Each slider has a digital display beside it so that the user can view the exact angular position he is sending to the arm. Buttons are also included beside each digital display for incrementing and decrementing the angles. The design lets only integer angular values to be sent to the arm. Figure 4 shows the Front Panel of the Simple Slider Control Experiment VI.

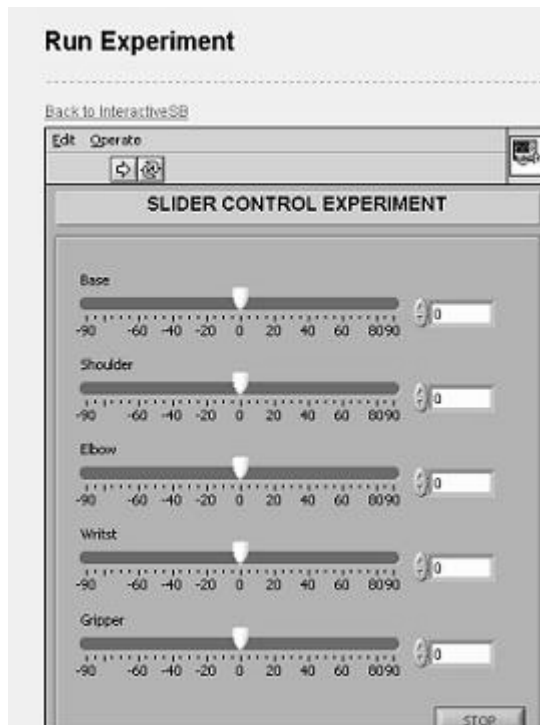


Figure 4: Front Panel of the Simple Slider Control VI.

The design of each experiment in the robotics laboratory is such that each motor of the robotic arm takes a maximum of a one degree step every 20 milliseconds as opposed to allowing the robotic arm to move as fast as the user moves the sliders. This was done for three reasons. Firstly, safety is a main concern of each online laboratory. By safety is meant safety of the laboratory equipment being used and safety to all surrounding components and equipment in the laboratory. One concern in the design was that if the robotic arm responds as fast as the user moves each of the sliders, if every user subjects the arm to successive rapid motions, wear and tear would quickly set in to the arm. Hence, the safety of the arm would be compromised if the arm responds as fast as the user's fast commands. Secondly, the user control over precise motions of the arm would be low. A glitch in the response of the user's computer or a faulty mouse could easily be transmitted onward to the robotic arm, again compromising the safety of the arm, but also resulting in user errors – depending on the laboratory instructor's instructions.

A third concern relates with the fact that since a live webcam feed is paramount to this laboratory and since users particularly in the third world often do not have access to high bandwidth connections to the internet, the video feed from the lab to the user should be of low resolution. Rapid robotic arm movements would require a high resolution video feed from the lab to the user to be able to capture each of the frames of the motion of the robotic arm and sufficiently transmit them to the user.

The VIs for the labs were designed such that they iterate from the current position they are to the new position specified by the user one degree every 20 ms (20 ms is the period of each instruction cycle being sent to each motor). Figure 5 shows the block diagram of the Simple Slider Control Experiment VI.

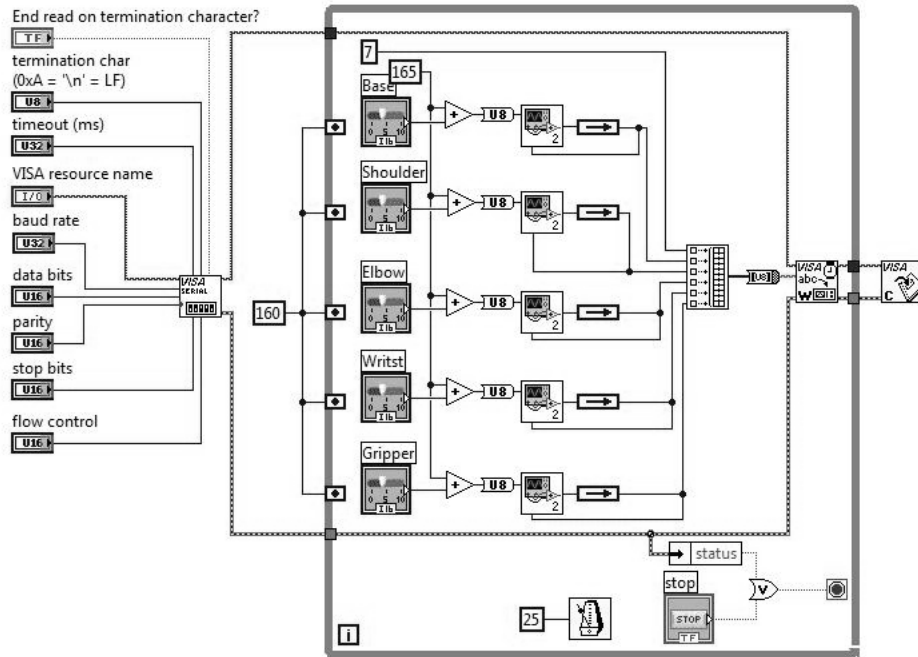


Figure 5: Block Diagram of Simple Slider Control Experiment VI

2. Effect of Gravity Experiment:

When programming a robotic arm, one has to take into account the weight of the arm that is the drag of earth's gravity on the arm. Hence, the torque which one would require to lower an object using a revolute joint would be different from the torque required to raise the revolute joint even if the resistance to motion is the same in both cases. This second experiment introduces students to this concept. In their work, Yamawaki and Yashima show that the output controllability of the motion of the end effector depends on both the configuration and dynamic parameters of a robotic arm, and the gravity acting on the arm¹¹.

This experiment uses a VI slightly modified from the VI used for simple slider control of the robotic arm. In this VI, a slider is placed to control the period of the pulse train being sent to the robotic arm. The user is required to vary the period of the pulse train being sent to the robotic arm and observe the response of the arm to different periods.

A five-degree of freedom servomotor controller board (SMC-05) was obtained with the robotic arm. The position of each motor is controlled by pulse-width modulation. The SMC-05 continuously sends pulses to each of the five motors. The width of each pulse tells the motor the position it is expected to be at (or move to). The period of the pulse train which the SMC-05 sends to the motors is 20 ms. The pulse width for each motor is varied between 0.75 ms and 2.55 ms dependent on the numerical value sent for that motor, 0.75 being for a numeric of 75 (90° counter clockwise) and 2.55 being for a numeric value of 255 (90° clockwise).

For this experiment, the user is required to vary the period of the pulse train containing the desired angular positions being sent to the robotic arm. The user does this by varying the sixth slider in figure 6. The user is allowed to vary the period between its minimum (20 ms) and 100 ms. Beyond 100 ms, the jerky motion of the robotic arm would compromise the safety to the robotic arm. The pulse width is only available to the student for variation

between 0.75 to 2.55 ms (which is done by varying angular positions being sent to the robotic arm between -90° and 90°).

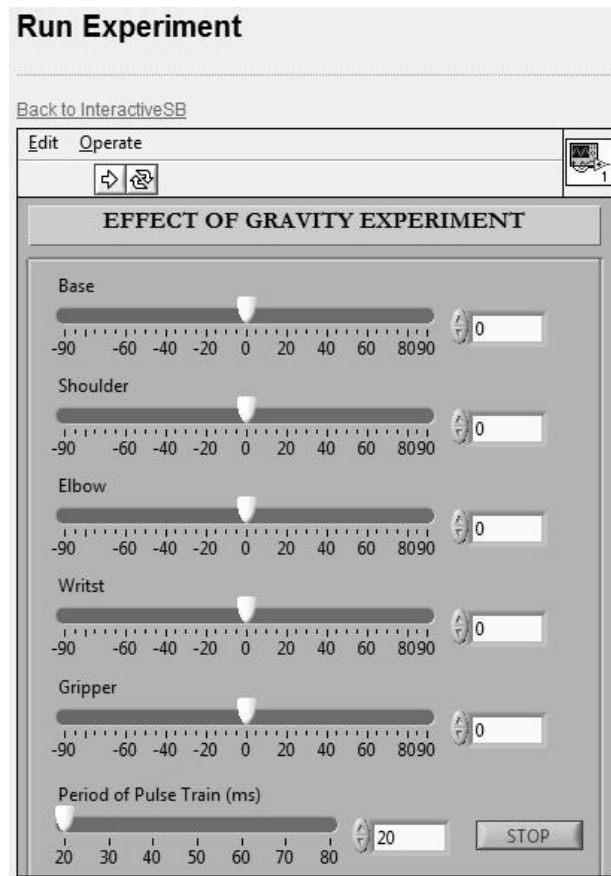


Figure 6: Front panel of the Effect of Gravity VI.

As the user gradually increases the period of the pulse train, he would observe from the live video stream that the robotic arm, when not in an upright position, would increasingly have jerky motions. The jerkiness of the motion is due to gravity acting on the arm. A servomotor has zero torque when not powered. When the period of the pulse train exceeds 20 ms, the servomotor is effectively “off” for the extra length of time. Hence, if a period of 45 ms is used, the servomotor is powered for 20 ms and then “off” for 25 ms. During this “off” period, the servomotor, having zero torque, is susceptible to the pull of gravity. Hence, if not in an upright position, it would begin falling under the influence of gravity until the next pulse comes in stating the desired position which it jumps back toward.

For this experiment, the user is required to vary the period of the pulse train, observe the outcome of the motion and explain why the motion is as it is, also stating why the motion of the arm is still very smooth at a period of 30 ms.

3. Trajectory Planning Experiment:

This experiment requires the user to determine the angular positions the robotic arm should go through to perform a task. These angular positions, which define a series of motions, will then be sent to the arm for execution in a tabular format. This experiment is geared at teaching the student the art of planning the trajectory of motion of a robotic arm, and by extension, a robot.

The VI is designed such that the user does not have much control over the velocity of the motors of the robotic arm. When moving, each motor moves one degree per instruction cycle (i.e. the period of the pulse train – 20 milliseconds). This is a constraint which the users of the lab would be required to work with. Figure 7 gives the front panel of the Trajectory Planning VI.

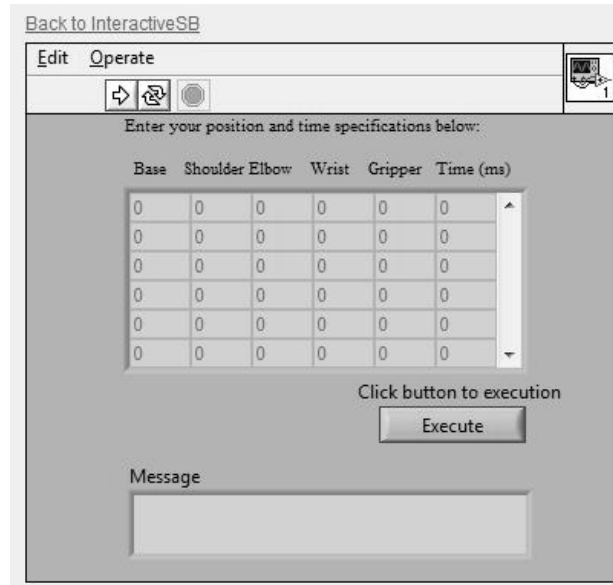


Figure 7: Trajectory Planning Experiment VI

The user is required to do the math for the inverse kinematics of the robotic arm. The experiment only gives the user control over the angular positions of the servomotors of the robotic arm. Hence, the user computes the forward kinematics and then the inverse kinematics for the individual gripper positions necessary to carry out the instructor specified task (for example, a pick and place routine).

The resulting angular positions arrived at for each of the positions which the robotic arm is desired to move through are placed in tabular form. These values are now entered in this VI and the execute button is clicked on. Error checking is first done to ensure that the entered values lie within the specified ranges of motion of each motor. If there is an error in the entered value(s), an error message to that effect is displayed in the Message box of (figure 7). If the entered values are ok, a message “No Error” is displayed and the entered array of angular positions is executed.

V. Preliminary Appraisal

A preliminary appraisal of the developed laboratory is discussed below as arrived at from usage by a few staff of the department:

1. Bandwidth Concerns:

The experiments, being interactive in nature, require that a feedback be given to the user in real-time. The feedback employed by this laboratory is visual: a live video feed from a webcam. When streaming the video at 320×240 pixels, a video size which would be deemed the minimum to enable dexterous user control over the robotic arm, the bandwidth requirement for a smooth image was 60 kbps per viewer using JavaScript or Flash for the streaming. For speeds at which the robotic arm would move (each motor moving at a

maximum of $1^\circ / 20 \text{ ms}$), the video feed at this data rate was smooth enough. Hence, if 10 users chose to view the live feed simultaneously (which ought to be an integral part of a laboratory process – watching while other students perform experiments before or after one's turn), the lab server would need to have at least 600 kbps uplink to satisfy the users' demand. With 100 viewers, the bandwidth would be way beyond what the lab has available. This issue is further worsened by the fact that at least two cameras ought to be used to enhance user precision. The time lag between the robotic arm motions and the motions in the video stream was about 0.8 seconds.

Hence, a direct streaming from the laboratory to each client could cause problems. To forestall this, an account was created with Mogulus (www.mogulus.com). Mogulus is a live broadcast platform on the internet through which a user can create a live, scheduled or on-demand internet TV applications¹⁵. With Mogulus, we stream live from the laboratory to the Mogulus server and all viewers of the webcam view the live feed from the Mogulus server through a player widget embedded in a webpage. Since Mogulus theoretically have an unlimited bandwidth, the number of users which can view the webcam feed is unlimited. When this was tested with the lab, a time lag of 2 to 5 seconds was observed between the robotic arm's movements and the movements on the video stream (depending on the network traffic). This made it really difficult to perform the first two experiments as they involved real-time response of the robotic arm to the slider movements of the user.

Streaming via Ustream (www.ustream.tv) was also tried with comparable results. Mogulus was preferred as there were more glitches, interruptions in the transmission, when Ustream was used, than when Mogulus was used.

As a fall-out from the above discourse, a smaller resolution and frame rate were employed: a resolution of 160×120 pixels; a frame rate of 14 frames per second. With these settings, a jerky video could be watched at 30 kbps. Also, work is being done on using both schemes, using a direct feed from the laboratory to the active user and using the Mogulus feed to all other viewers of the webcam. This is because the time lag is only really an issue for the person who is actively controlling the arm at the time.

2. Controlled Environment:

When pick and place experiments were test run, it became obvious that the environment for such experiments would have to be controlled. Firstly, the object to be picked and placed would best be an object which does not bounce so that since the work envelope of the robotic arm is limited, the object would not bounce out of range if the user dropped it from an altitude.

3. The LabVIEW Runtime:

One major draw-back of using the Remote Panels feature of LabVIEW is that as stated earlier, the user must have the requisite LabVIEW Runtime installed on his computer to be able to view the client. The Runtime engine for the version of LabVIEW used for this work (version 8.2) is 91.5 MB in size. Downloading and installing this Runtime could prove challenging for low bandwidth networks. The latest release of LabVIEW, version 8.6, has a slim Runtime installation (28.7 MB in size) as well as the full Runtime installation (108 MB). The slim installation supports the features necessary for Remote Panels. Using this version would ameliorate the download problems, but not solve it as 28.7 MB is still large for low bandwidth networks.

A second issue with the LabVIEW Runtime is that while it integrates well into Internet Explorer, Mozilla Firefox, Opera web browser, Google Chrome and Apple Safari are all unable to load the LabVIEW Runtime to launch the lab client. Hence, running the experiments is only possible with Internet Explorer. This is a little restrictive as several web users often have other browser preferences. The laboratory has not been tried in the Linux environment.

VI. User Data and Analysis

The developed experiments in this laboratory currently do not fit into any part of the curriculum of the Electronic and Electrical Engineering Department of the Obafemi Awolowo University. However, a robotics club has been set up by the IEEE Student member chapter in the department. It is intended that this club would performing the experiments in the robotic lab this summer.

Prior to this, however, 500 level students of the department (about seventy students) were told to perform the experiments. Since one of the main design considerations was that the laboratory (the experiments, the clients and the documentation) should be intuitive enough for a person not previously exposed to robotics, the students were made to perform the experiments without a physical instructor giving instructions. The students were told to obtain the instructions from the laboratory's website and follow them as best as they could. Upon completion of the experiments, they were required to download and fill a questionnaire about their lab experience. The following data was obtained from them:

1. LabVIEW Runtime Installation:

81.5 % complained that they did not have access to a computer which was connected to the internet on which they could install the LabVIEW Runtime to perform the experiments.

The other 18.5 % (13 students) install the LabVIEW Runtime, sharing 3 laptops between them.

0 % downloaded the LabVIEW Runtime from the lab server. Two students copied the Runtime from me and others got it from them.

Note that it is impossible to view the experiment clients over the internet without the Runtime. Hence, non-installation of the Runtime means that one cannot perform any of the experiments.

2. Live Video Viewership:

46 % of those who installed the LabVIEW Runtime were able to view the live video feed from Mogulus and Ustream. These attempted the experiments from a network with a bandwidth of 60 kbps and more.

54 % were unable to view the live video feed. These attempted the experiments from a network with a bandwidth of 15 kbps and less.

3. User Experience:

a. Lab intuitiveness:

The average score given by the users for the intuitiveness of the lab (i.e. the experiment clients and the available documentation) was 72.9 %.

b. Depth of understanding:

From the questions asked the students sequel to their performing the experiments, our average assessment of the depth of their understanding of the concepts being taught, introduced and experimented in the lab is 55 %.

c. User's Rating of the Lab:

The average user rating was 79.2 %

d. User complaints:

67 % of users complained about the latency in the live video feed from the webcam.

30 % complained about the moderately low quality of the video stream from the webcam.

Two users complained having wrong times being presented to choose from during the scheduling session. This was resolved when they changed the time zone setting of their computer to that for Nigeria (GMT +1). The documentation for the lab has been updated to specify that users check the time zone settings of their computer to ensure that they have the right time zone selected.

A number of users complained about not having the full specified time for each session available to them. It was discovered that differences in the times between the individual computers and the lab scheduling server were causing these disparities. This is being resolved.

The trajectory experiment, sometimes, resulted in the robotic arm beginning to jerk uncontrollably and becoming unresponsive to user input. This is being further investigated.

VII. Further Work Ahead

As a result of the feedback from users of the laboratory, a number of options are being considered in providing visual feedback to the lab user from the lab. One possibility is the introduction of a virtual robotic arm in a virtual work cell ¹⁶. This simulated environment would be embedded in the user's web browser (hence, would probably run on java) and respond immediately to user input. The user input would also be sent to the robotic arm and the live video will still be made available, but the user would have a simulated robot which would respond immediately and then he can view the live video feed to see if the live robotic arm responds the same way. A second benefit of using a simulated robotic arm in addition to the video feed is that the low resolution of the video feed becomes less significant as the simulation provides a high resolution feedback to the user.

Further work ahead will introduce another robotic arm, one which would support PID control experiments and which would give the users control over the torques of the individual motors.

VIII. Conclusion

On online laboratory has been set up at the Obafemi Awolowo University, available at <http://ilab.oauife.edu.ng/MergedServiceBroker>. The simple slider control experiment introduces newbies to the workings of a robotic arm. The Effect of Gravity Experiment allows students to observe practice with gravity concerns in the programming of a robotic arm. The Trajectory Planning Experiment is a medium whereby students practice inverse kinematics.

Bandwidth issues are the main concern of this laboratory as a live webcam feed is paramount to each of the experiments in the laboratory. Hence, work lies ahead on ways of minimizing the lab's bandwidth requirements while still presenting the necessary visual, auditory and possibly haptic feedback to the user¹⁷ and minimizing simulations which could give students the feel of being in a virtual laboratory instead of an online laboratory.

References

1. Trevelyan, J. (2004). "Lessons Learned from 10 Years Experience with Remote Laboratories". International Conference on Engineering Education and Research "Progress Through Partnership", Ostrava, ISSN 1562-3580
2. Harjono (2001). Telelabs Project: Online Temperature Control Laboratory. Mechatronics Engineering Honors Thesis. University of Western Australia.
3. Casini M., Prattichizzo D. and Vicino A. (2001). The Automatic Control Telelab: A Remote Control Engineering Laboratory. Proceedings of the 40th IEEE Conference on Decision and Control, Orlando, USA. ThM 10-5.
4. Böhne, A., Faltin, N. and Wagner, B. (2002). "Self-directed Learning and Tutorial Assistance in a Remote Laboratory." Interactive computer Aided Learning Conference. Villach, Austria. 2002.
5. Bonivento, C., C. Gentili, L., Marconi, L. and Rappini, L. (2002). "A Web-Based Laboratory for Control Engineering Education". Dipartimento di Elettronica Informatica e Sistemistica, University of Bologna.
6. Duan, B., Ling, K., Mir M. Hosseini, H (2004). "Developing and Implementing Online Laboratory for Control Engineering Education". Nanyang Technological University.
7. Ling K.V., Lai Y.K. and Chew K.B. (2001). "An Online Internet Laboratory for Control Experiments". Advances in Control Education 2000, Pergamon, Great Britain, pp 173-176.
8. Harward J., Mao T. T., Jabbour I. (2006). "iLab Interactive Services – Overview". Available at <http://icampus.mit.edu/iLabs/architecture/downloads> Accessed on 7th July 2008.
9. National Instruments Corporation (2000). "LabVIEW Basics I. Course Manual".
10. National Instruments Corporation (2003). "LabVIEW Basics I. CD".
11. Images SI Inc (2006). "RA-01 Robotic Arm & Controller Manual & User's Guide".

12. Yamawaki, T. and Yashima, M. (2007). "Effect of Gravity on Manipulation Performance of a Robotic Arm". National Defense Academy of Japan, Yokosuka, Japan.
13. Ayodele K. P., Kehinde L.O., Jonah O., Ilori O., Ajayi E.O.B., Osasona O.O. (2008): Development Of An Operational Amplifier Virtual Laboratory Based On ILab Architecture And NI Elvis. Proceedings of the ASEE Annual Conference and Exposition, June 2008, Pittsburgh.
14. Olowokere D., Kehinde L.O., Jonah O., Ayodele K. P., Ajayi E.O.B., Osasona O.O. (2008): Human And Infrastructure Issues In The Development Of Web-Based Laboratories In Challenged Environments. Proceedings of the ASEE Annual Conference and Exposition, June 2008, Pittsburgh.
15. <http://www.mogulus.com/info/about>. Accessed on 5th Feb 2009.
16. Safaric R. (2001). "Telerobotics Experiments Via the Internet." IEEE Transactions on Industrial Electronics, Vol. 48, No. 2, pp 424 – 431.
17. Bethea B.T., Okamura A.M., Kitagawa M., Fitton T.P., Cattaneo S.M., Gott V.L., Baumgartner W.A., and Yuh D.D. (2004). "Application of Haptic Feedback to Robotic Surgery". Journal of Laparoendoscopic & Advanced Surgical Techniques. Vol. 14, No. 3, pp 191 – 195.
18. Del Alamo, J. A., Brooks L., Mclean C., Hardison J., Mishuris G., Chang V., and Hui L. (2002). "The Mit Microelectronics Weblab: A Web-Enabled Remote Laboratory For Microelectronics Device Characterization." 2002 World Congress On Networked Learning In A Global Environment, Berlin (Germany), May 2002.