

Yuchen Feng

## Heuristic Evaluation: Musical Sketches

1. Minor: “Continue to Music Library” button on homepage (not efficient, not minimalist)
  - a. Details: User must click “Continue to Music Library” on the home page, rather than simply being directed to the library. Unnecessary if there are no other options on homepage. (Figure 1)
  - b. Suggestion: Go directly to the User Library.
2. Catastrophic: Fat fingers problem (little user control/freedom)
  - a. Details: Tapping the screen to add a note often results in inaccurate placement due to finger fatness. User must try multiple times to place notes correctly. (Figure 4)
  - b. Suggestion: Make the music sheet larger or allow zooming.
3. Catastrophic: Incomplete notes set (does not match real world)
  - a. Details: Does not provide users an option to add notes above/below the staff. (Figure 5/6)
  - b. Suggestion: Provide an option to allow users to designate a note as “8va”
4. Major: No frequently used settings (no defaults)
  - a. Details: Every time a user creates a new composition, s/he must enter information about tempo, key, meter, and clef. This is tedious.
  - b. Suggestion: Provide user with templates.
5. Catastrophic: Cannot change composition properties (little user control/freedom)
  - a. Details: User cannot change name/tempo/meter after creating a piece, must create new piece instead.
  - b. Suggestion: Allow user to edit a piece’s properties.
6. Major: Cannot create measures (does not match real world)
  - a. Details: Does not provide a bar to allow users to insert measures.
  - b. Suggestion: Provide a button to allow users to insert a bar.
7. Good: Automatic saving of composition (good error recovery)
  - a. Details: If user presses the “Back” or “Home” button on their phone, the composition is auto-saved.
8. Good: Can switch clefs (user in control)
  - a. Details: User allowed to switch clefs during composition.
9. Cosmetic: Homepage background picture looks stretched out (aesthetics)
  - a. Details: When rotating the phone to horizontal view, the homepage background looks unnaturally stretched out.
  - b. Suggestion: Use a logo that is not so elaborate and can easily adapt to both vertical and horizontal views.
10. Catastrophic: Empty fields leads to system crash (poor error prevention)
  - a. Details: While editing composition details after clicking “Create New Composition,” if user leaves the fields empty the system crashes.
  - b. Suggestion: Alert user that the fields are empty.
11. Major: Lack of search in User Library (poor efficiency)
  - a. Details: Cannot search for compositions in User Library; a huge problem if there are a lot of compositions.

- b. Suggestion: Provide a search box with autocomplete.
- 12. Minor: Non-configurable sort (lack of user control/freedom, defaults)
  - a. Details: Users should be able to configure sort settings in User Library (i.e. by date or name). Also, should provide a default sorting scheme (i.e. name). User should not have to go to Options and choose to sort manually.
  - b. Suggestion: Provide a configurable sort in Options.
- 13. Good: Option for help provided (good help/documentation)
  - a. Details: In Options, provides a Help button. (Figure 2/3)
- 14. Major: Delete all (lack of user control/freedom, poor error prevention)
  - a. Details: User can easily delete all with a mis-tap in User Library. Also, they have no way of selecting a subset for deletion. They can only delete one composition or delete all of them.
  - b. Suggestion: Provide a view with a checklist to allow users to selectively delete compositions; include an delete all option in this new view.
- 15. Good: Response when a note (good visible navigation/feedback)
  - a. Details: When user highlights note in Edit Composition mode, the note is highlighted and indicates that user has selected it.

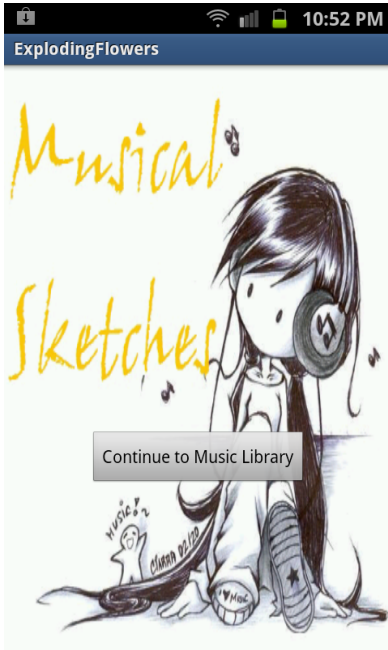


Figure 1

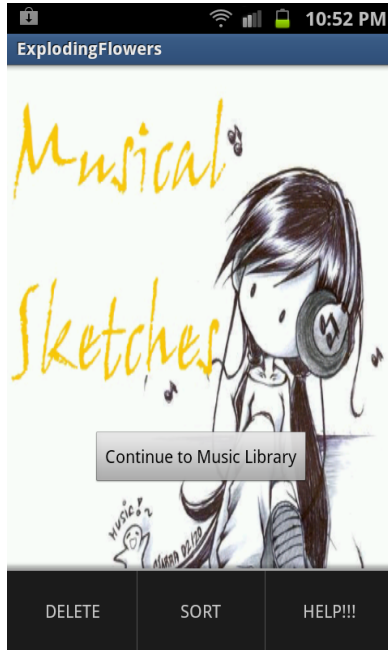


Figure 2

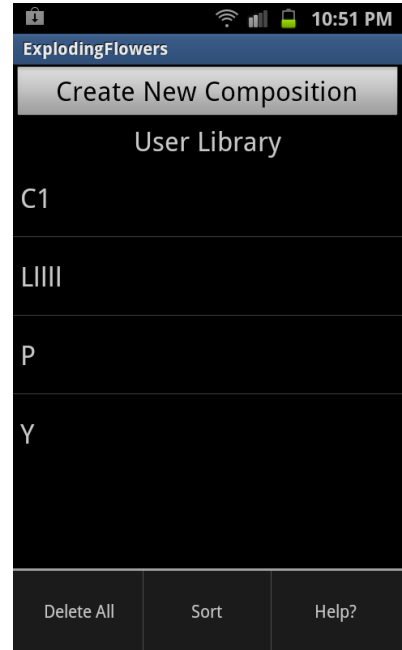


Figure 3

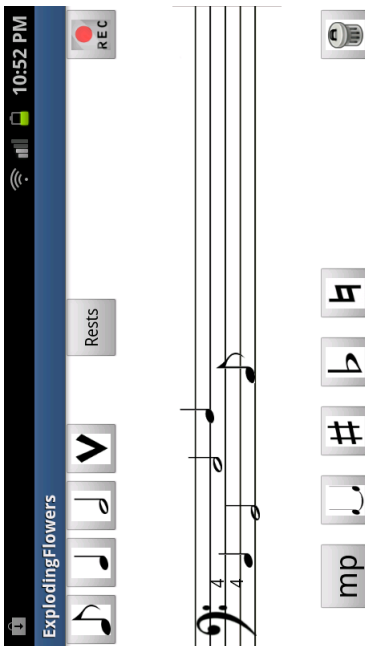


Figure 4

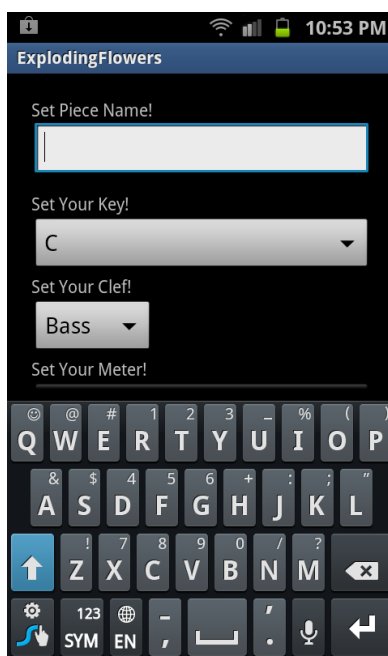


Figure 5

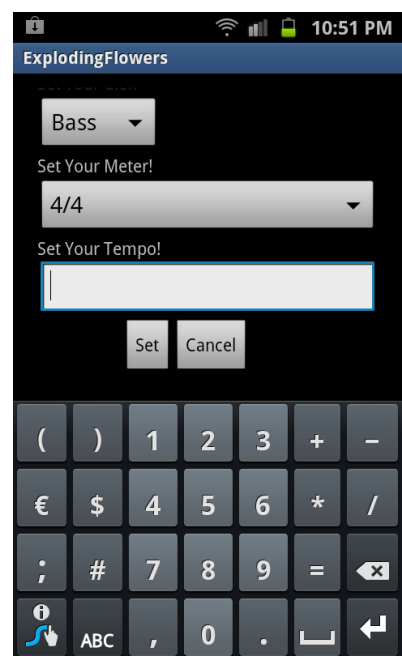


Figure 6