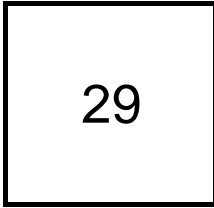


## Creating Cases

Created Last Week



### Cases Created Per Day

Average	Max
5.80	8 last week
3.77	9 6 weeks
6.95	25 6 months

### Total Last Week

29 opened  
25 closed

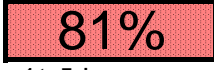
### Month so far

85 opened  
84 closed

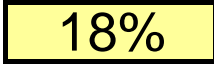
Pending Cases as of 3/1/2010

## Closing Cases

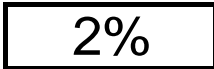
7 or more days



1 to 7 days

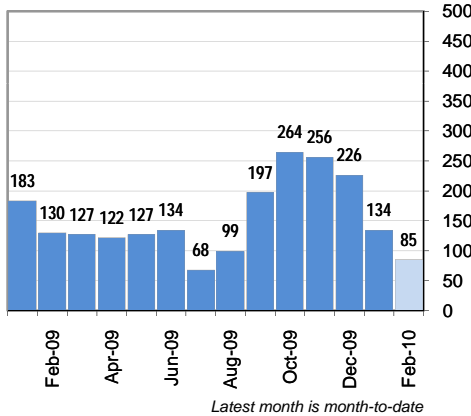


< 24 hours

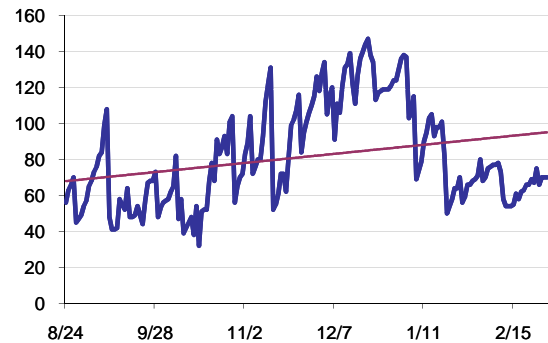


(over the last six weeks)

### Cases Created Per Month



### Pending Queue over the last 6 months



Net effect over six months:

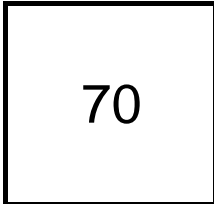
14 ↑

### Stalled Cases

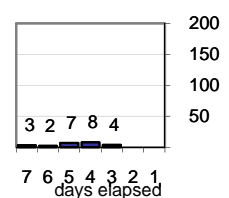
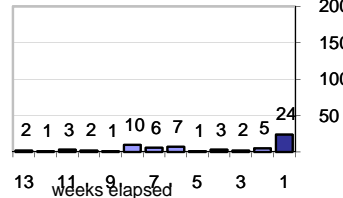
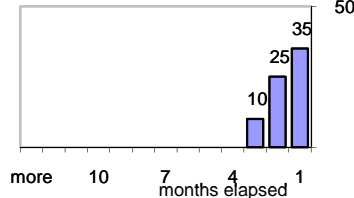
101 age of oldest, in days gone by  
84 longest in days since any activity

## Pending Queue

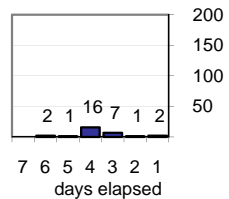
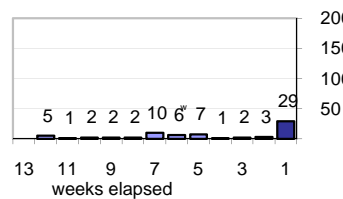
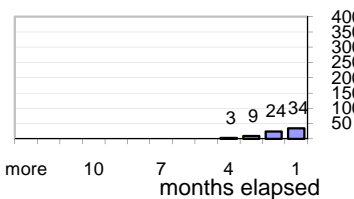
Currently Open



### Age of Active Cases



### Time Since Any Activity in Active Cases

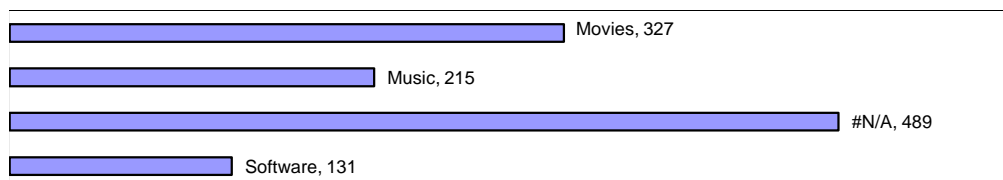


## Complaint Types

### Top Complaint Types over 6 months

Copyright Infringement 1,162

### Sources of Copyright Infringement Complaints



### Relative Volume of Copyright DMCA Cases, year to year

