

# Managing Access to Digital Libraries of Images

Jolene de Verges, Images Librarian, Rotch Library





# Local and Remote Collections

- Local Collections **DOME**
- Subscription-based collections **ARTstor**
  - Shared Shelf model for remotely hosting local content
- Images licensed to MIT **Aerial Photography**
- Special collections with long-lasting value **DOME**
  - Aga Khan Visual Archive
  - Perceptual Form of the City
  - Intrinsic Built Form Collection
  - Historic Topographic Maps

# DOME Collections

- 37,000 images that support the curriculum in Art, Architecture and Planning
- Hosted locally @ MIT
- Most (but not all) are restricted to MIT
- Unique images from primary source material
- Licensed images



**Search Dome**

  
[Advanced Search](#)

**Browse**

- **All of Dome**
  - [Communities & Collections](#)
  - [By Issue Date](#)
  - [Authors](#)
  - [Titles](#)
  - [Subjects](#)

**My Account**

- [Login](#)
- [Register](#)

**Links**

- [RSS 1.0](#)
- [RSS 2.0](#)

Dome Home >

# MIT Libraries' Dome

Dome is home to a growing collection of digitized content of the MIT Libraries. Currently, Dome holds a collection of over 25,000 digitized images of Art and Architecture from the Rotch Visual Collections. New collections of photographs, maps, documents, and other materials will be added over time to enrich the Dome collection of online resources.

## Communities in Dome

Select a community to browse its collections.

- [MIT Communications Forum](#)
- [Perceptual Form of the City](#)
- [Project Whirlwind](#)
- [Rotch Visual Collections Online](#)

All items in MIT Libraries' Dome are protected by original copyright, with all rights reserved, unless otherwise indicated.

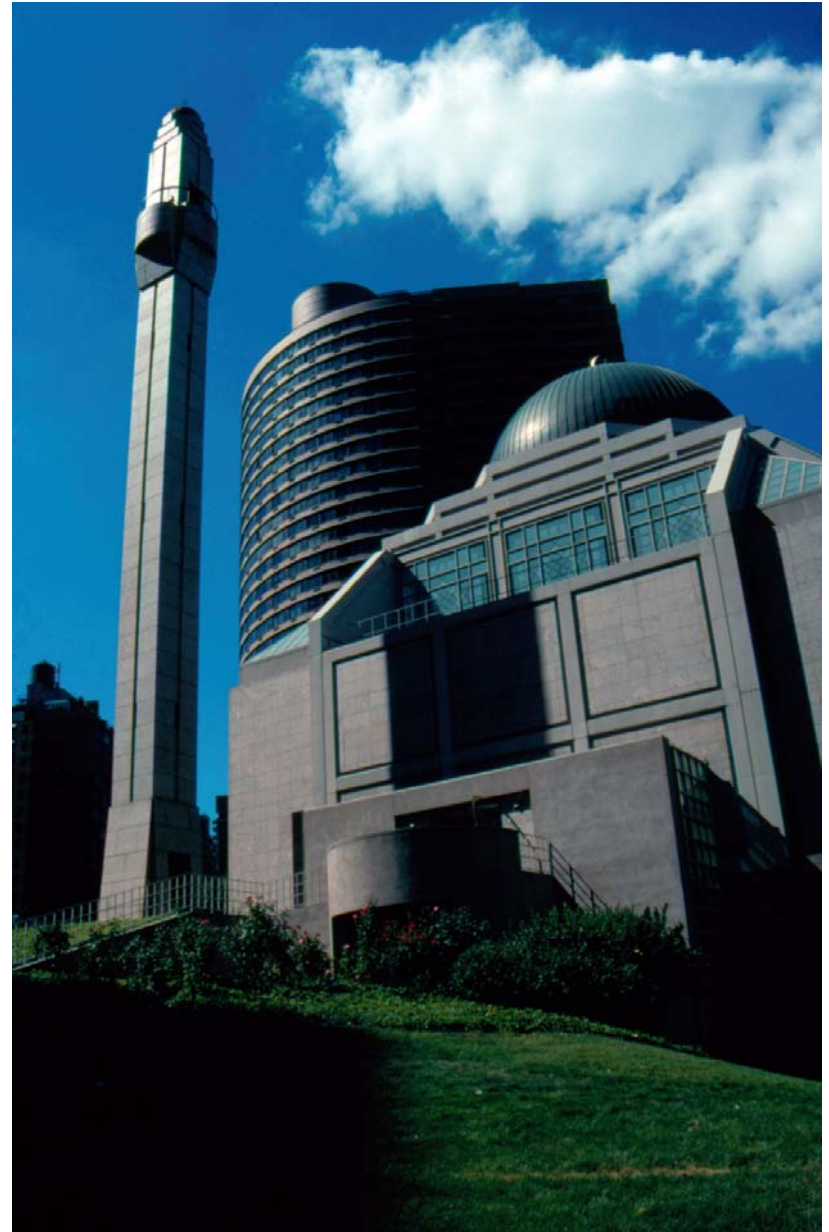
MIT MASSACHUSETTS INSTITUTE OF TECHNOLOGY

DSPACE

[Send Feedback](#)



# USA Mosques

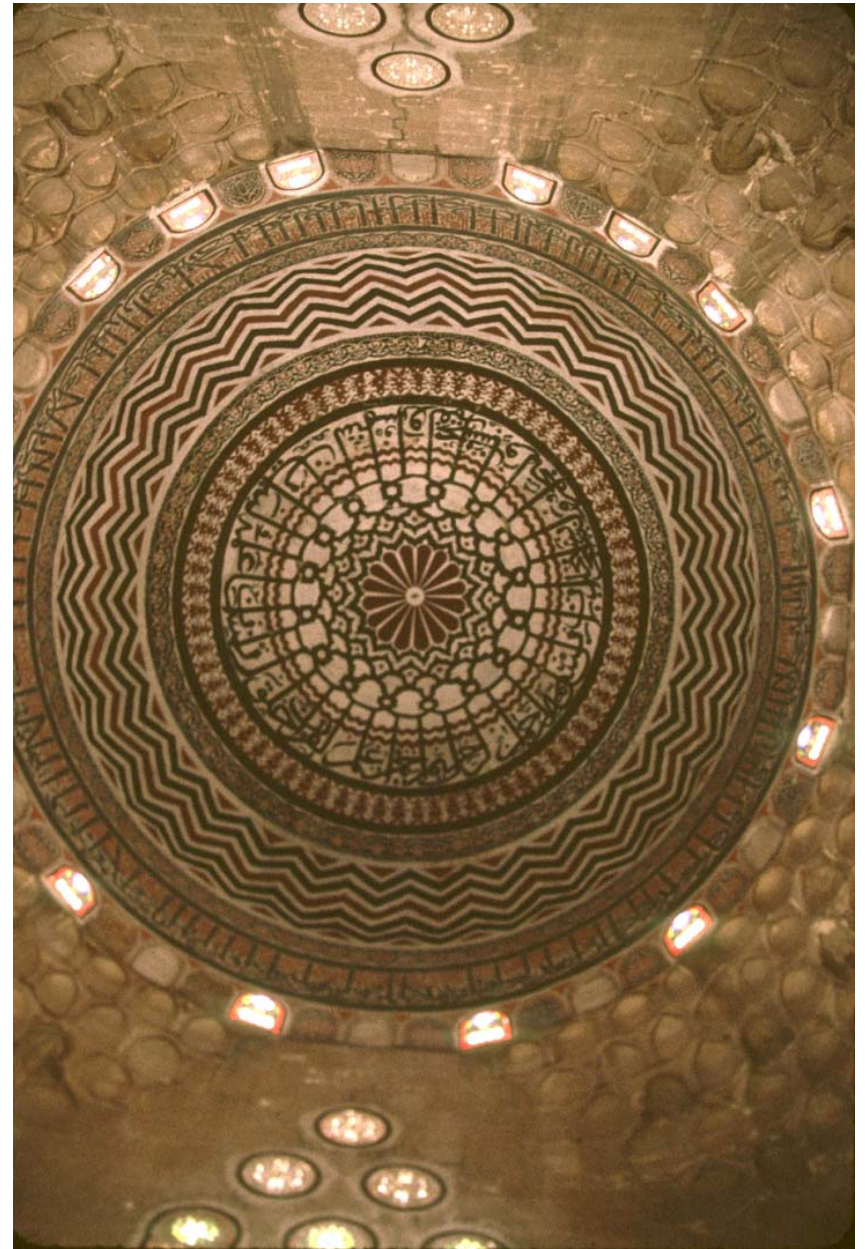


Photos by Khalil Pirani

# Karimabad & Ghulkin, Pakistan



# Domes of Medieval Cairo



Photos by Vivek Agrawal & Sonit Bafna

# Beirut, Lebanon: destruction, Emir Mansour Assaf Mosque



Photo by Shirine Hamadeh





# Perceptual Form of the City

Gyorgy Kepes & Kevin Lynch



Perceptual form of the city: Gyorgy Kepes & Kevin Lynch

MIT Institute Archives  
Rotch Visual Collections

The objects in this collection relate to Kevin Lynch's study **The Perceptual Form of the City**, conducted in Boston, Massachusetts from 1954-1959.

In 1954 MIT Professor Kevin Lynch began studying city form in a five year project funded by The Rockefeller Foundation. The study was done under the direction of Lynch and Professor Gyorgy Kepes at the Massachusetts Institute of Technology Center for Urban and Regional Studies. Their research findings were the foundation of Lynch's theories on city planning discussed in his seminal work *The Image of the City*.

**The Perceptual Form of the City** study addressed the legibility and imageability of the American city in terms of the individual's perception of the urban landscape. The study focused on the cities of Boston, Massachusetts, Los Angeles, California, and Jersey City, New Jersey.



Copley Square, Boylston Street Baker's Plays Sign

The collection includes photographs and records from the Boston phase of the project. The nearly 2,000 black and white photographs, shot by Nishan Bichajian, assistant to Professor Kepes, document the Boston urban environment during the mid-1950s prior to urban renewal. The records document the planning, preparation, and progress of the project (1951-1956), and the research process and findings (1954-1959).



<http://www.flickr.com/photos/mit-libraries/sets/72157614966285159/>

View a full-screen slideshow of this image, download this image, or use the Global Flash Player

# Kepes-Lynch Photograph Collection

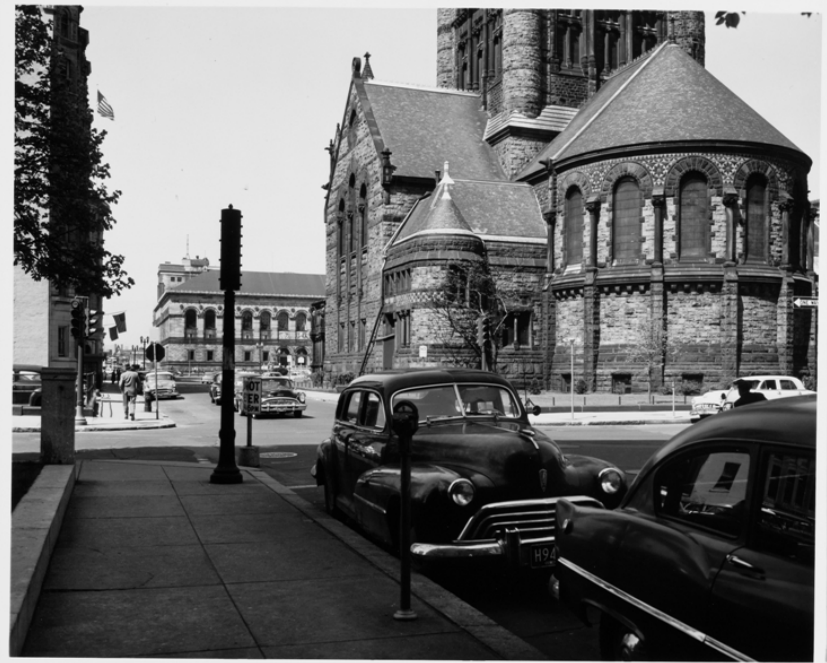
Thumbnails Detail 3 comments



The objects in this collection relate to Kevin Lynch's study *The Perceptual Form of the City*, conducted in Boston, Massachusetts from 1954-1959.

In 1954 MIT Professor Kevin Lynch began studying city form in a five year project funded by The Rockefeller Foundation. The study was done under the direction of Lynch and Professor Gyorgy Kepes at the Massachusetts Institute of Technology Center for Urban and Regional Studies. Their research findings were the foundation of Lynch's theories on city planning discussed in his seminal work *The Image of the City*.

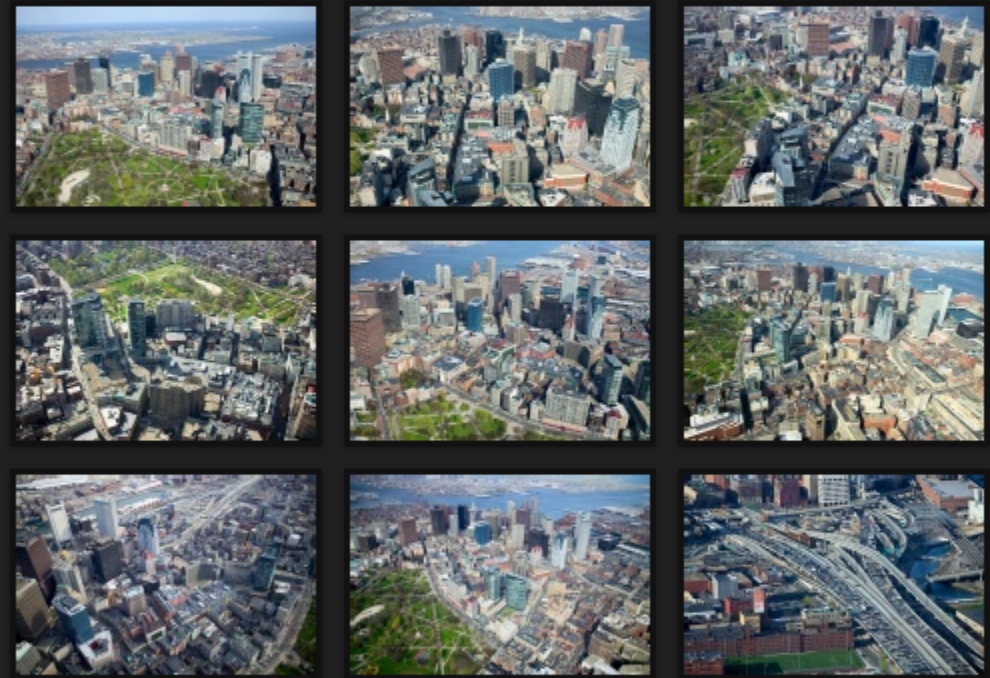
The *Perceptual Form of the City* study



# LANDSLIDES

AERIAL PHOTOGRAPHY

- HOME PAGE
- EDUCATIONAL ↕
- BOSTON →**
- BOSTON VICINITY
- CHICAGO
- WESTERN ARIZONA
- NEW URBANISM
- DENVER
- EDITORIAL & ADVERTISING
- COMMERCIAL
- COLAS
- FINE ART
- BOOKS
- ABOUT
- SEARCH ARCHIVE
- CONTACT









# Intrinsic Built Form Collection

Teaching collection of Professor (Emeritus)  
Maurice Smith

Add 
 Update 
 Delete

Thumbnail 
 List 
 Item 
 Customize 
 Find 
 Properties 
 Preview

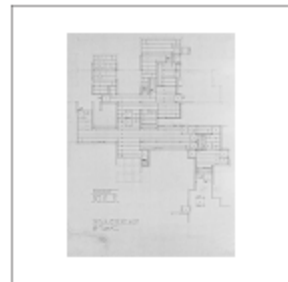
QuickFind

- Galleries
- All Items
  - Last Cataloged
  - Abris
  - Access
  - Alternations
  - Arcades
  - Assemblage
  - Bays
  - Bent Pi to Islands
  - Branching
  - Built Surfaces
  - Center Control
  - Direction of Access
  - Directional Fields
  - Edge +Infill
  - Frame +Infill
  - Intensification
  - Internally-controlled forms

- Folders
- MKS\_Scans

MKS Scans.fdb - All Items

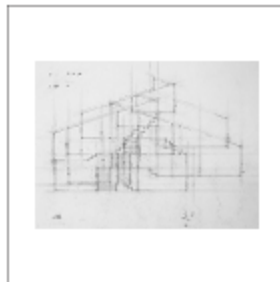
Showing 4477 of 4477 items



080806-015-MA.jpg  
Blackman House



080802-265-MA.jpg  
Blackman House



080802-515-MA.jpg  
Blackman House



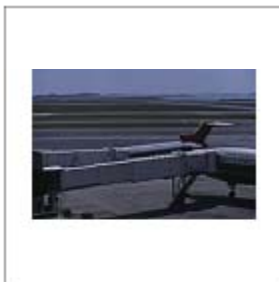
060505-073-MA.jpg  
Blackman House model



060505-074-MA.jpg  
Blackman House model



060505-079-MA.jpg  
Blackman House model



060609-109-MA.jpg  
boarding bridges



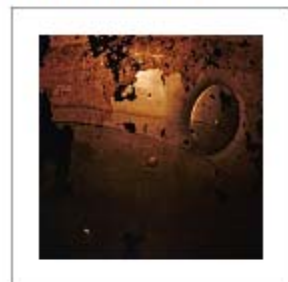
051120-044-MD.jpg  
Bollman Truss Bridge



060609-044-MD.jpg  
Bollman Truss bridge



060609-096-MA.jpg  
Bond House



060509-063-A.jpg  
bottle glass



060509-064-A.jpg  
bottle glass



060509-065-A.jpg  
bottle glass



061020-032-CA.jpg  
Bradbury Building



061130-034-CA.jpg  
Bradbury Building





# Hosted Institutions Collections through ARTstor

**Shared Shelf**

## SEARCH

Enter a keyword and Go!

All Collections [v](#)[Read Search Tips](#)

GO

 Use our **advanced search** to specify additional search criteria.


## BROWSE

Browse ARTstor by:

- **GEOGRAPHY**  
(e.g., Afghanistan, Albania, Algeria...)
- **CLASSIFICATION**  
(e.g., painting, performing arts, photography...)
- **COLLECTION**  
(i.e., ARTstor, Institutional, Personal...)

## FOLDERS AND IMAGE GROUPS



OPEN

## INSTITUTIONAL COLLECTIONS

- **Archivision Library - Base Collection**
- **Archivision Library - Addition Module One**
- **Archivision Library - Addition Module Two**
- **Archivision Library - Addition Module Three**

## QUESTIONS?

Email your **institutional contact**  
 Email **ARTstor**

**Universal Electric Iron**, before 1948 |  
 Landers, Frary & Clark, company design |  
 The Museum of Modern Art

[Display advanced search](#)

[6160] Record(s)

Sort by:

Title

Creator

Date



Page 5 of 257



Click image to select. Double click to enlarge. Click caption to view full record.

University of...  
architectsAlliance...  
2002-2005 (creation)...University of...  
architectsAlliance...  
2002-2005 (creation)...University of...  
architectsAlliance...  
2002-2005 (creation)...University of...  
architectsAlliance...  
2002-2005 (creation)...University of...  
architectsAlliance...  
2002-2005 (creation)...University of...  
architectsAlliance...  
2002-2005 (creation)...University of...  
architectsAlliance...  
2002-2005 (creation)...University of...  
architectsAlliance...  
2002-2005 (creation)...University of...  
architectsAlliance...  
2002-2005 (creation)...University of...  
architectsAlliance...  
2002-2005 (creation)...University of...  
architectsAlliance...  
2002-2005 (creation)...Milwaukee Art...  
Santiago Calatrava...  
1997-2001 (creation)...Milwaukee Art...  
Santiago Calatrava...  
1997-2001 (creation)...University of...  
architectsAlliance...  
2002-2005 (creation)...University of...  
architectsAlliance...  
2002-2005 (creation)...University of...  
architectsAlliance...  
2002-2005 (creation)...University of...  
architectsAlliance...  
2002-2005 (creation)...Hyatt Center  
Henry Nichols Cobb...  
2002-2005 (creation)...