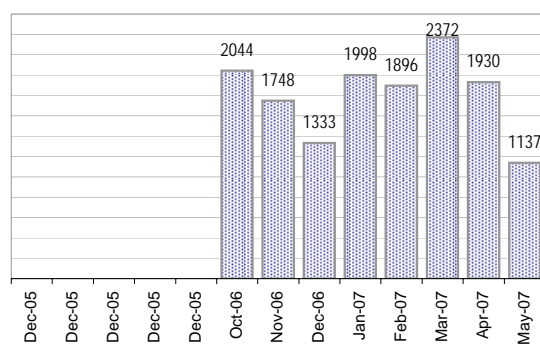


Creating Cases

Total from Last Week

433

Cases Created, Year Ago to Date

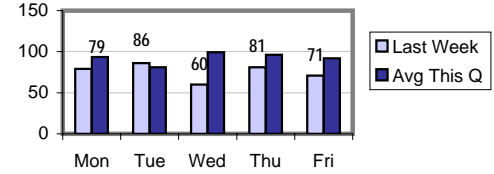


Average Per Day

Now Year Ago

this week	57.0	n/a	n/a
last 3 months	68.0	n/a	n/a
last 12 months	38.5	n/a	n/a

Actual Per Day, Last Week vs Qtrly Average



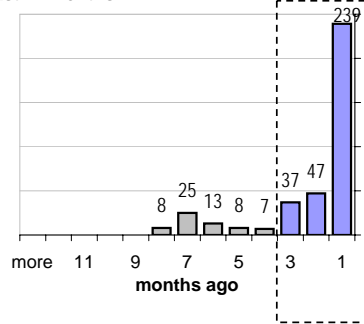
The Queue

Currently Pending

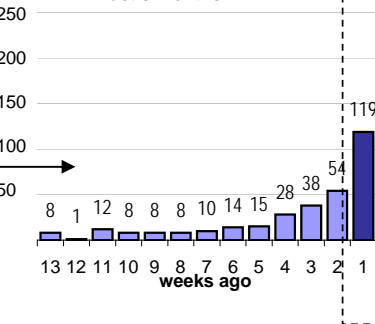
384

Calendar Age of Open Cases

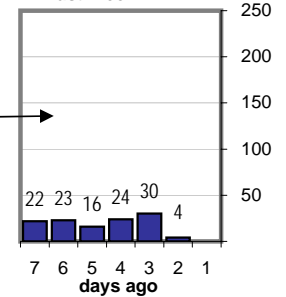
Last 12 Months



Last 3 months

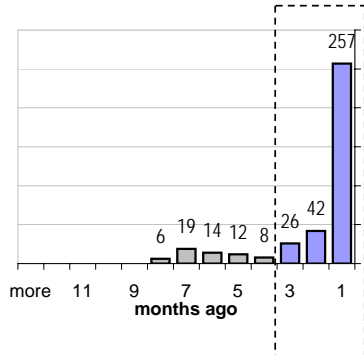


Last Week

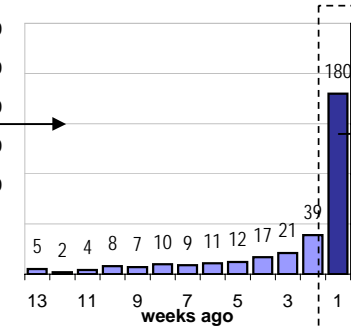


Time Since Last Activity of Any Kind, in Cases that are currently Open

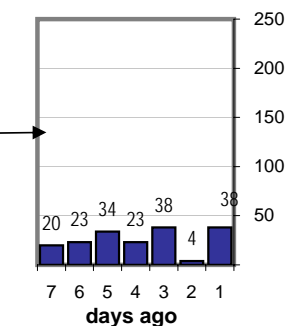
Last 12 Months



Last 3 months



Last Week



Closing Cases

more than 7 days

26%

3 to 7 days

8%

< 3 days

67%

(over the last six weeks)

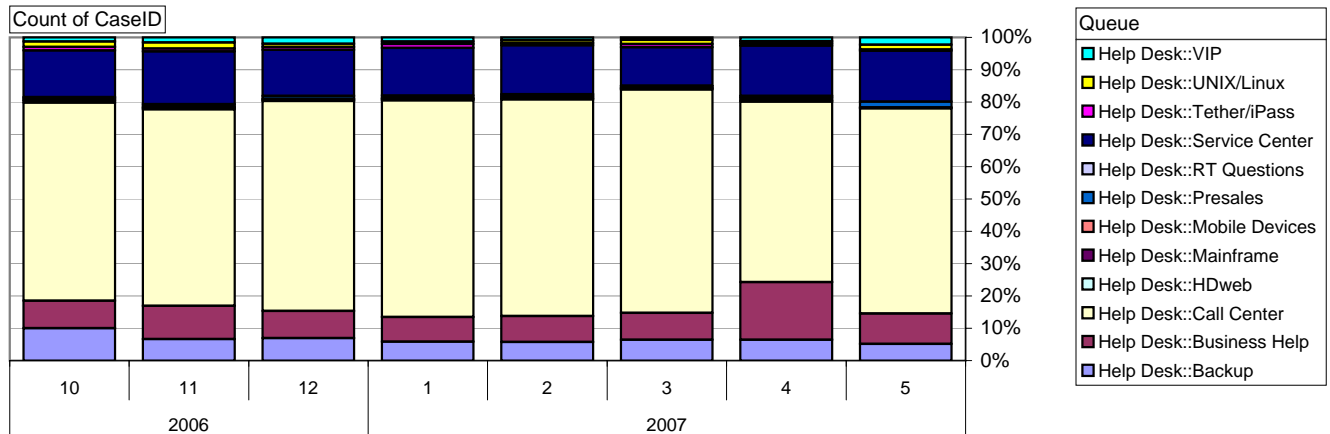
Estimated Pending Queue over the last six months



Net change in Q over six months:

-114 ↓

Relative Volume by Queue, By Month



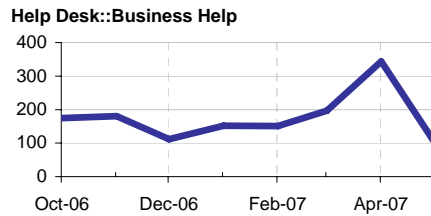
Business Help

Time to Resolve

slow % 22%

med. % 7%

fast % 71%



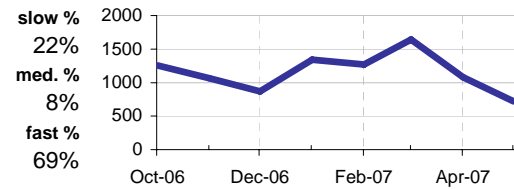
Call Center

Time to Resolve Help Desk::Call Center

slow % 22%

med. % 8%

fast % 69%



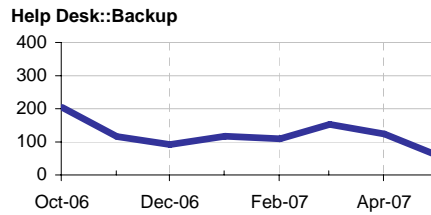
Backup

Time to Resolve

slow % 23%

med. % 6%

fast % 71%



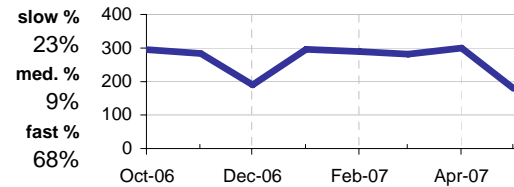
Service Center

Time to Resolve Help Desk::Service Center

slow % 23%

med. % 9%

fast % 68%



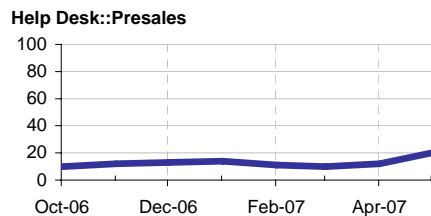
Presales

Time to Resolve

slow % 15%

med. % 7%

fast % 77%



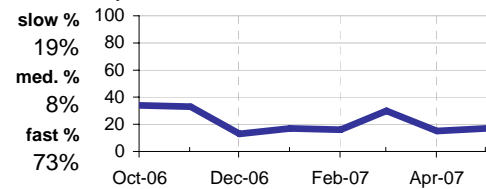
Unix/Linux

Time to Resolve Help Desk::UNIX/Linux

slow % 19%

med. % 8%

fast % 73%



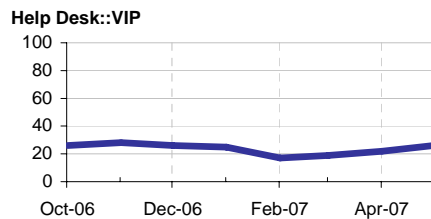
VIP

Time to Resolve

slow % 15%

med. % 79%

fast % 5%



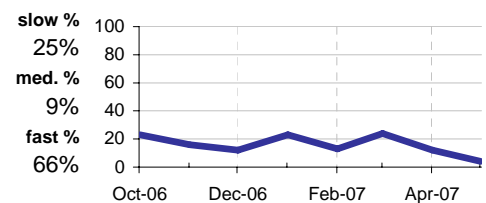
Tether/iPass

Time to Resolve Help Desk::Tether/iPass

slow % 25%

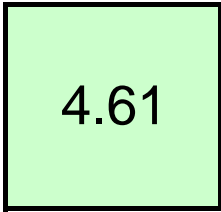
med. % 9%

fast % 66%



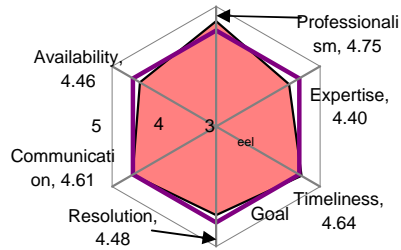
Client Satisfaction

Overall Last Week

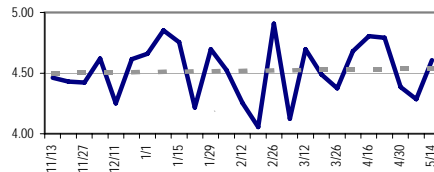


N = 17; 5 point scale

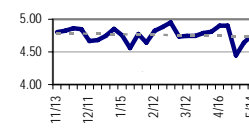
Individual Components, Last Week



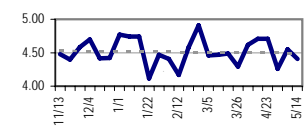
Overall



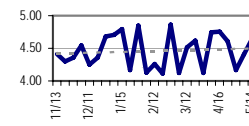
Professionalism



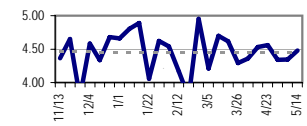
Expertise



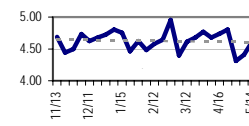
Timeliness



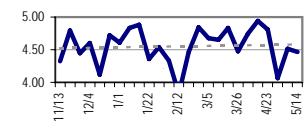
Resolution



Communication

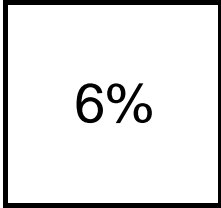


Availability

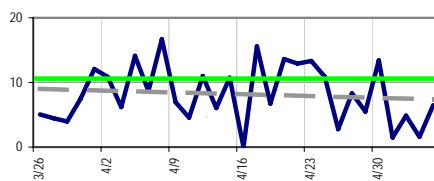


ACD Measures

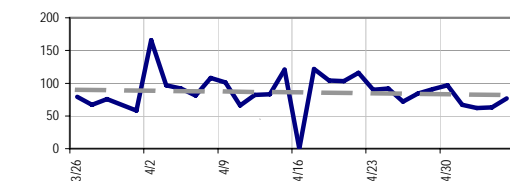
Avg Abandon Last Week



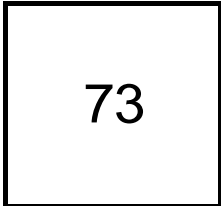
Avg Daily Abandon Rate



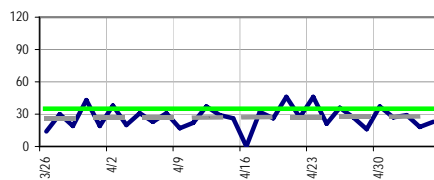
Avg Daily Calls Offered



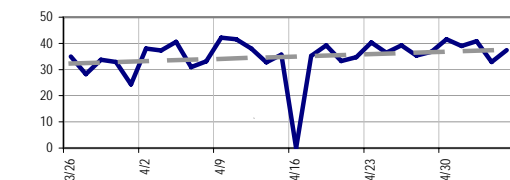
Avg Calls Offered



Avg Daily Wait Time, in Seconds



Call Center Agent Hours Logged Per Day



Calls per Logged Hour per day
 1.91 last week change -33%
 2.47 over 6 weeks
 2.85 over 6 months

Avg Call Length, in minutes
 6.94 last week change 7%
 6.42 over 6 weeks
 6.51 over 6 months

Average Hours Logged per Day
 38.34 last week change 12%
 36.09 over 6 weeks
 34.10 over 6 months

Average Offered Calls per day
 73.20 last week change -25%
 89.10 over 6 weeks
 97.22 over 6 months

Calls Offered by Time of Day

