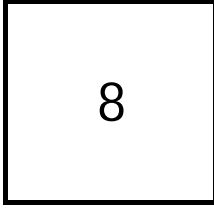


Creating Cases

Created Last Week



Cases Created Per Day

Average	Max
2.00	3 last week
2.03	6 6 weeks
2.97	43 6 months

Total Last Week

8 opened
22 closed

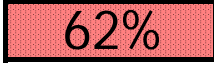
Month so far

7 opened
45 closed

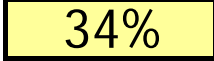
Pending Cases as of 9/4/06

Closing Cases

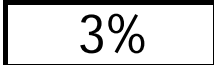
7 or more days



1 to 7 days

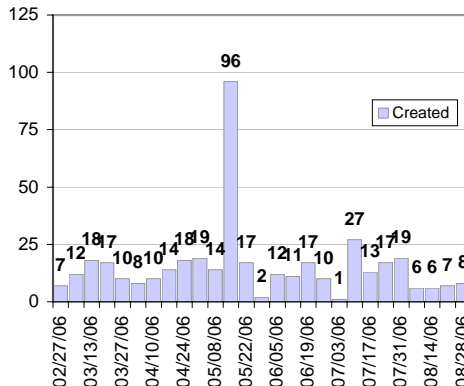


< 24 hours

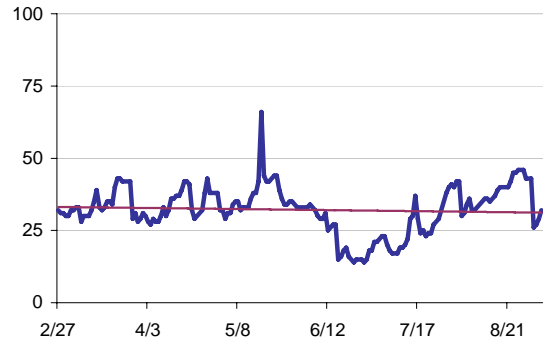


(over the last six weeks)

Cases Created Per Week, last six months



Pending Queue over the last 6 months



Net effect over six months:

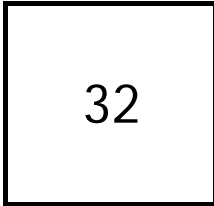
0 ↔

Stalled Cases

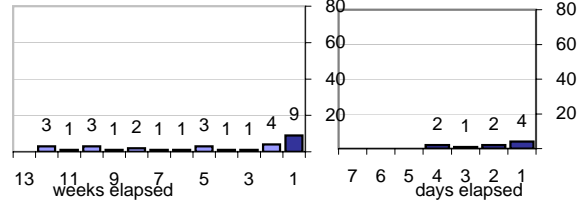
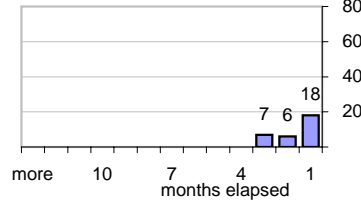
403 age of oldest, in days gone by
84 longest in days since any activity

Pending Queue

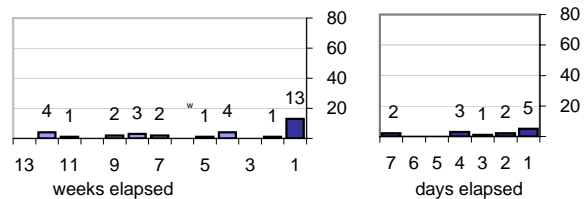
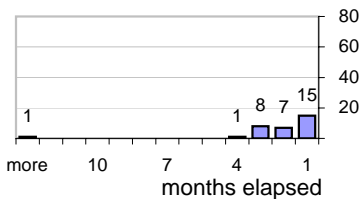
Currently Open



Age of Active Cases



Time Since Any Activity in Active Cases



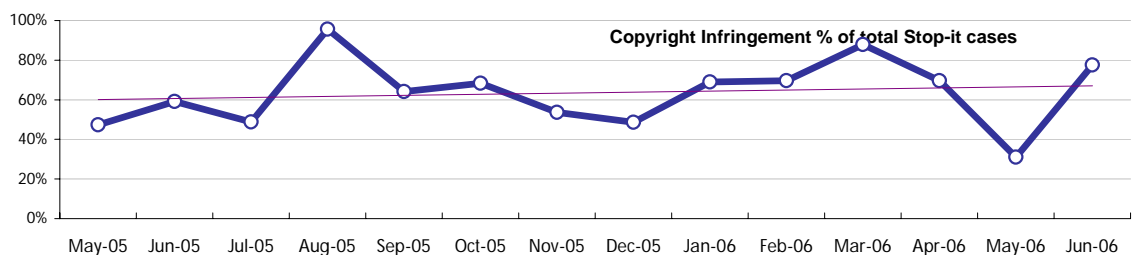
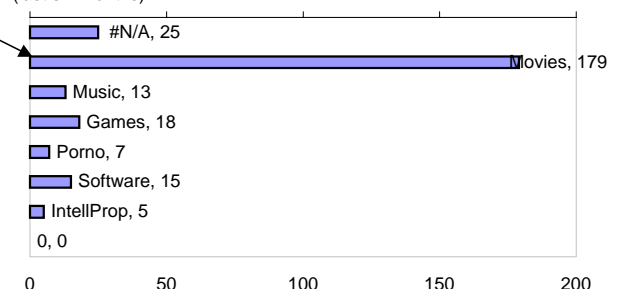
Complaint Types

Top 10 Complaint Types over 6 months

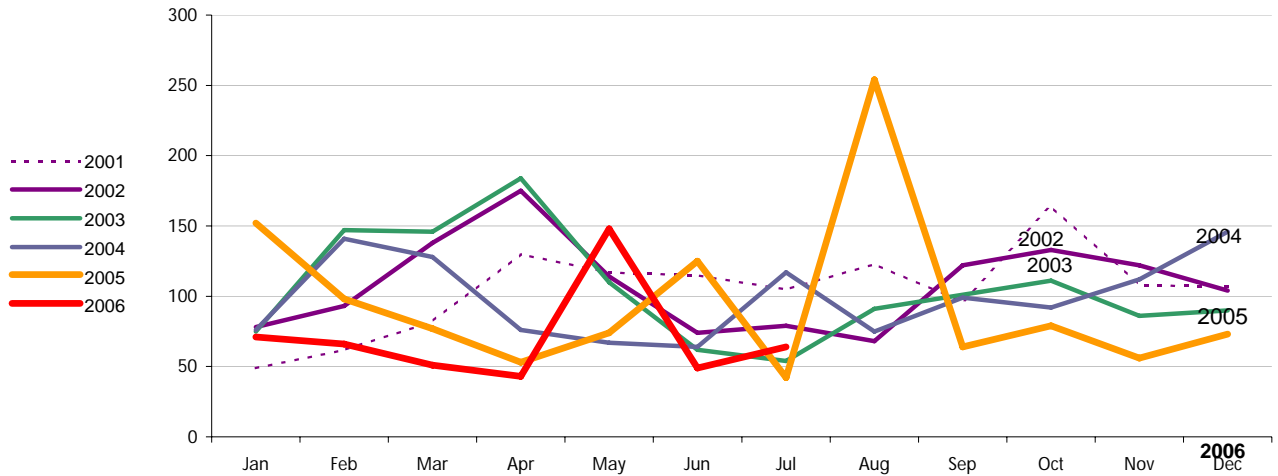
Copyright Infringement	250
Spam	76
Offensive Web Page	11
Misuse of MIT mail system	1
Forged Email	1
non-complaint	3
Other	9
Abuse of printers: multiple copies	3
Abuse of Workstation	2
Commercial use	2

Sources of Copyright Infringement Complaints

(last six months)



Relative Volume of StopIt Cases, year to year for at least five years



Volume of StopIt Cases, month to month for at least five years

