

e-Builder

# Project Definition (PD) and MPBE

Bob Brosseau

e-Builder Trainer

e-Builder Training | May 2017



Department of Facilities  
Massachusetts Institute of Technology

# Project Definition Form Creation

---

- Started by the CC Planner, CC Planning Manager, eB admin, Project Manager, R&M Manager, or UTILITIES Program Manager.
- If the CC Planner does not start the PD Form process the first step will go to the CC Planner.
- The Project Manager Review step is “touch” step for the PM.
- The approval workflow culminates in a Merge step that creates the PD Form.
- The MPEB (03.01) process is spawned following PD Merge step.
- The final PD Form is created following CC planning Mgr approval.

# Process Output

---

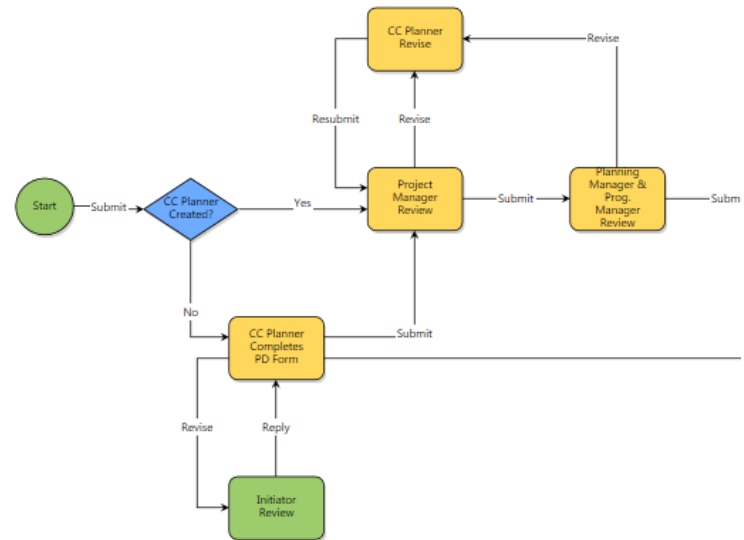
Three key functions of the PD Form process.

1. Routes immediately to the CC Planner if the process is started by someone else.
2. Creates a draft PD form and a Final PD Form.
3. Spawns the 3.01 Milestone Project Estimate process. It appears in the Project Manager's court for completion.

# PD Form, Initial Step Sequence

This is the first sequence of steps for creating the PD form.

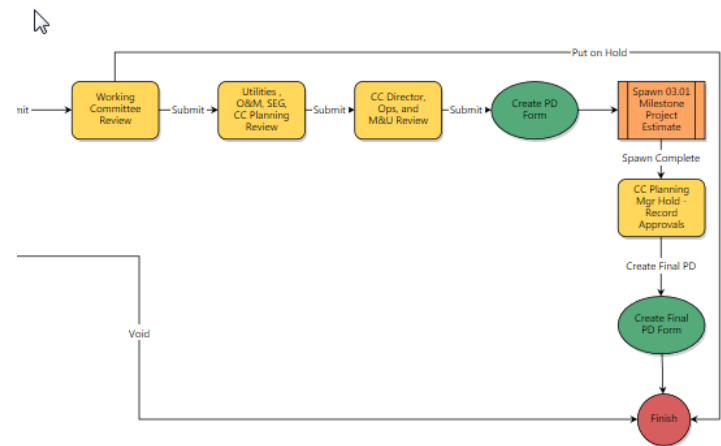
- If the CC Planner does not start the process the first step routes to that role.
- The CC Planner and Project Manager can engage in a Submit and Revise loop to complete work on the PD form content.
- The Project Manager's submission will go to the Planning Manager and Program Manager for review/approval.



# PD Form – Remaining Steps

---

- Assuming the form is not voided this sequence begins with Working Committee Review.
- Other reviews and approvals take place prior to the draft PD form being created.
- The 3.01 MPEB process is spawned.
- The final PD Form is printed in the final process step.



# Processes:

## Helpful Skills to Know

---

- Filtering to view a process
- Using Submit and Revise steps (revise allows for a reviewer to request a correction or ask questions)
- Comments – making and requesting
- Attaching documents to processes
- Print merge template (Current View and Merge Templates)
- Show History, Current Actors, Workflow Diagram