



**nexthaus**  
**syncje** for Blackberry

## TABLE OF CONTENTS

<b>1 Introduction to SyncJe for BlackBerry .....</b>	<b>3</b>
A) Purchasing a License .....	3
B) Required Components .....	3
<b>2 Installing SyncJe for BlackBerry .....</b>	<b>3</b>
A) Download directly to BlackBerry .....	3
B) Download to Desktop and transfer files to BlackBerry .....	4
<b>3 Settings for SyncJe for BlackBerry .....</b>	<b>6</b>
A) Adding required information to your BlackBerry .....	6
B) Additional Settings on your BlackBerry .....	7
<b>4 Synchronize using SyncJe for BlackBerry .....</b>	<b>9</b>
A) Start Synchronization .....	9
B) New Slow Sync Session .....	9
<b>5 Uninstall SyncJe for BlackBerry.....</b>	<b>10</b>



= Important Notes



= Technical Information



= Feature Specifications

## 1 Introduction to SyncJe for BlackBerry

SyncJe for BlackBerry allows you to synchronize your Address Book, Calendars, Notes and Tasks to servers, clients and other handheld devices that have SyncML. A license must be purchased in order to utilize SyncJe for BlackBerry past the 15 day free trial period.

### A) Purchasing a License

Go to <http://nexthaus.com/products.html>.

1. Enter a username you wish to use for SyncJe for BlackBerry.
2. Click "Buy."
3. Follow PayPal Instructions.

### B) Required Components

The following is required for SyncJe for BlackBerry to function properly:

- BlackBerry with OS Version 4.0.2 or higher
- Internet Connection and Browser application on the BlackBerry
- BlackBerry Server access information (from your SyncML server provider)
- Username and Password

## 2 Installing SyncJe for BlackBerry

There are 2 methods for installing SyncJe for BlackBerry.

1. Download directly to BlackBerry
2. Download to Desktop and transfer files to BlackBerry



**You must have a USB cable or facsimile that connects from your PC to your BlackBerry in order to install SyncJe for BlackBerry.**

### A) Download directly to BlackBerry

Start your BlackBerry Browser

1. Download SyncJe for BlackBerry from <http://nexthaus.com/products.html>
2. Select SyncJe for BlackBerry and download file.
3. Look for SyncJe Application on your BlackBerry

## **B) Download to Desktop and transfer files to BlackBerry**

This process requires installation to the desktop; then transfer via USB or communication port to your BlackBerry.

**Download SyncJe from <http://nexthaus.com/products.html>.**

### **Part 1: Desktop Installation**

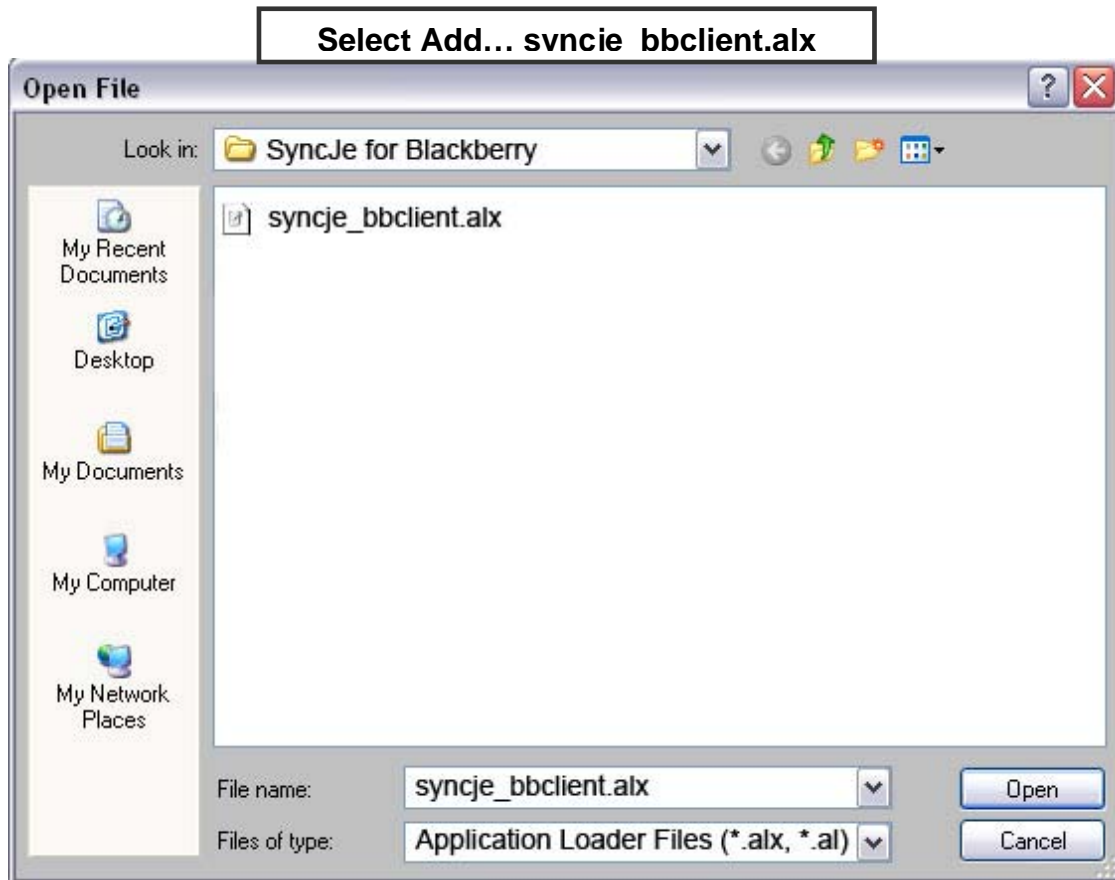
1. Select SyncJe for BlackBerry.
2. Double click on the downloaded file named “BlackBerry\_2.0.exe.”
3. Welcome Screen
  - a. Click “Next,” to proceed
  - b. Click “Cancel,” to stop installation.
4. End User License Agreement
  - a. Click “Back,” to return to the previous screen.
  - b. Click “Next,” to accept End User License Agreement
  - c. Click “Cancel,” to stop installation.
5. Select Directory you wish to place SyncJe
  - a. Click “Back,” to return to the previous screen.
  - b. Click “Next,” to accept directory location.
  - c. Click “Cancel,” to stop installation.
6. Install Folder into Directory “SyncJe for BlackBerry”
  - a. Click “Back” to return to the previous screen.
  - b. Click “Next,” to accept folder name or type in a folder name you prefer.
  - c. Click “Cancel,” to stop installation.
7. Setup Complete
  - a. Click “Finish.”

### **Part 2: Transfer via USB cable or some other type of communication port to your BlackBerry**

1. Connect your USB cable or facsimile to your PC and BlackBerry.
2. Start the BlackBerry Desktop Manager.
3. Double click the “Application Loader” to start the Application Loader Wizard.
  - a. Click “Next.” If the loader asks for a communication port make sure the BlackBerry is connected to your computer.
  - b. Select Add... in the Application Selection Dialog, go to the directory where you

unzipped the files and select the “syncje\_bbclient.alx” file.

4. You should now see the SyncJe-BB application and several other modules in your list of applications.
  - a. Click “Next,” to transfer the application to your BlackBerry.



The BlackBerry will restart after you click “Finish”, SyncJeBB can be found in the “Applications” section.

### 3 Settings for SyncJe for BlackBerry

The following information is required in order to synchronize to the server:

#### A) Adding required information to your BlackBerry

1. On your BlackBerry browse for SyncJe for BlackBerry on the Main Menu of your BlackBerry.
2. Select SyncJe by clicking the “Track wheel.”
3. Select “Settings” by clicking the “Track wheel.”
4. Fill in required information.
5. Select “Save,” by clicking “Track wheel.”



**Username and Passwords cannot be modified once they have been registered.**

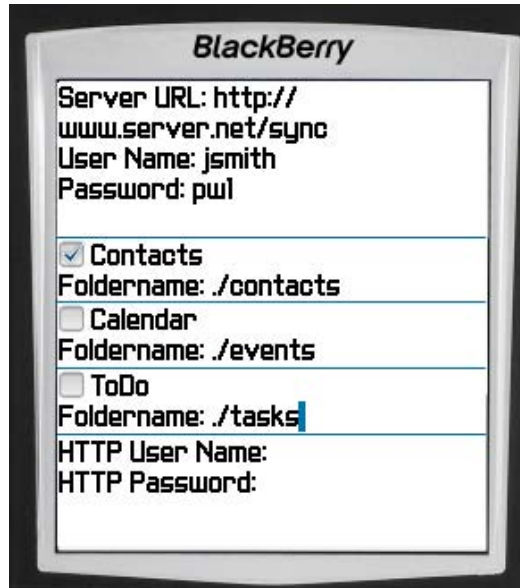


The “Track wheel” is located on the top right side of your BlackBerry. It is often used to scroll menus.

#### Required Information

Required	Description
<b>Server URL</b>	This is where you enter the address to your SyncML server. There are some incidences where on some models the line will break up into two or more. Common ways for addresses to appear are: <a href="http://www.syncserver.net/sync">http://www.syncserver.net/sync</a> <a href="http://www.syncserver.net:8080/sync">http://www.syncserver.net:8080/sync</a> <a href="http://24.123.345.345:8080/sync">http://24.123.345.345:8080/sync</a>
<b>User Name/Password</b>	Most if not all servers will have at least one level of security, if you have a user name and password for SyncML security enter them here.

**Blackberry Settings**



You can also enter folder names manually; general convention for folder names are ./contacts, ./events, ./tasks. In some instances you may need to verify with the server administrators what folder names are.

**B) Additional Settings on your BlackBerry**

Additional Settings	Description
<p><b>Folders</b></p>	<p>You can receive folders directly from the server once required information is saved rather than manually inputting folder names.</p> <p><b>Getting Folders</b></p> <ol style="list-style-type: none"> <li>1. On the “Settings” screen click the “Track wheel.”</li> <li>2. Select “Get Folders” by clicking the “Track wheel.”</li> <li>3. The phone will pause for a while as the information is retrieved from the Server.</li> </ol>
<p><b>HTTP User Name and Password</b></p>	<p>Some servers use a second level of security.</p> <p>If you see the follow error message:</p> <ul style="list-style-type: none"> <li>• 506 Transport layer failed while sending message to server: Authentication failed</li> </ul>

	You will need to enter your HTTP user name and password when you sync. Sometimes the HTTP user name and password will be the same as the SyncML user name and password.
<b>MDS</b>	If you are connected to the Internet through an MDS server, you need to check this box. Leave this box unchecked if you connect through WAP.
<b>WAP Gateway</b>	You will have to set up extra parameters for some service providers.
<b>IMEI Number</b>	<p>A few servers will ask you to enter an IMEI number or other unique number to identify the device. You should use the PIN number of your BlackBerry instead.</p> <p><b>Finding your PIN Number</b></p> <ol style="list-style-type: none"><li>1. Select SyncJe icon by clicking the "Track wheel."</li><li>2. Select Settings&gt;Options&gt;Status, your PIN Number should be found here.</li></ol>



---

## 4 Synchronize using SyncJe for BlackBerry

---

The first time you synchronize a slow sync is performed. Slow sync sends all data on your device to the server. After the initial sync all modifications made on your device are recorded and transferred to the server in the next sync session. Only data changed on the client or the server will be synced.

### A) Start Synchronization

1. On your BlackBerry browse for SyncJe on the Main Menu of your BlackBerry.
2. Select SyncJe by clicking the “Track wheel.”
3. Select “Start Sync” by clicking the “Track wheel.”

### B) New Slow Sync Session

To perform a new slow sync after the initial slow sync you will have to reset. Resetting removes the information that keeps track of changes and when the last sync session was made.

#### Reset Option

Resetting will remove sync session information.

#### To Reset

1. On your BlackBerry browse for SyncJe on the Main Menu of your BlackBerry.
2. Select SyncJe by clicking the “Track wheel.”
3. Click the “Track wheel” again; select “Reset” from the menu.

Once you have reset, a slow sync will be forced the next time you select “Start Sync.”



**Sync times may vary due to the following:**

- Internet connection speed
- Amount of data being transferred and time elapsed during transfer.
- OS version of your BlackBerry

## 5 Uninstall SyncJe for BlackBerry

---

### A) Delete SyncJe from your BlackBerry

1. On your BlackBerry browse for SyncJe on the Main Menu of your BlackBerry.
2. Select SyncJe by clicking the “Track wheel.”
3. Click the “Track wheel” again; select “Settings” from the menu.
  - a. Click the “Track wheel” select “Options” from the menu.
  - b. Click the “Track wheel” select “Applications” from the menu.
4. Scroll down to SyncJe-BB and select “Delete,” by clicking the “Track wheel.”

### B) Uninstall SyncJe from the Desktop Manager

1. Start the Application Loader
2. Uncheck “SyncJe-BB.”
3. Click “Next.”
4. Click “Finish.”

All data related to SyncJe will be deleted including Settings and License information.



**SyncJe will be permanently removed from you PC when you uninstall from the Control Panel or the Start Menu.**