

Unravelling long-term behaviour in historic geophysical data sets

Thomas Ulich

Sodankylä Geophysical Observatory, Sodankylä, Finland

thu@sgo.fi - <http://cc.oulu.fi/~thu/>

(2014-07-24)

Sodankylä Geophysical Observatory

- ➔ First observations during the International Polar Year 1882/83.
- ➔ Established 1913.
- ➔ Finland independent from Russia in 1917.
- ➔ Part of University of Oulu since 1997.
- ➔ Oldest scientific research institute in Northern Finland.



Where we are...



SGO

67°22' N
26°38' E

- ✓ European Arctic
- ✓ High Latitude
- ✓ Auroral Zone

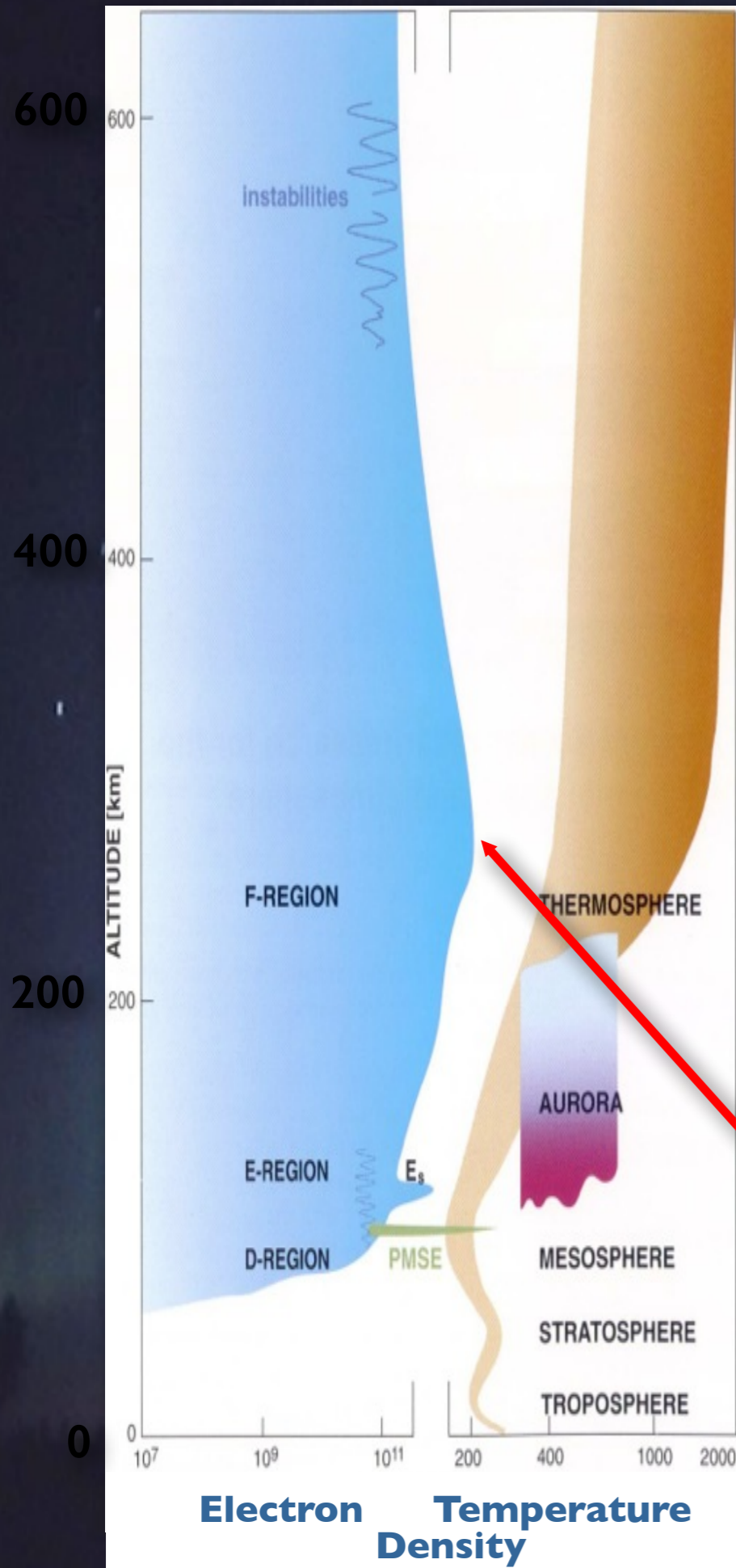
Greenhouse Cooling

Doubling of $[\text{CO}_2]$ and $[\text{CH}_4]$
cools

Mesosphere by 10 K and
Thermosphere by 50 K.

Atmosphere shrinks.

Layer of maximum electron
density *lowers* by 15-20 km.



Greenhouse high up?

- Model results, assuming doubling of CO₂ and CH₄:
- Stratopause cools by 8 K, stratosphere by 15 K.
(Brasseur & Hitchman, 1988)
- Mesosphere and thermosphere cool by 10 K and 50 K, respectively.
(Roble & Dickinson, 1989)
- F2-layer peak (hmF2) lowers by 15-20 km.
(Rishbeth, 1990)
- Riometer absorption decreases.
(Serafimov & Serafimova, 1992)
- Stratopause cools by 14 K, mesosphere by 8 K, thermosphere by 50 K.
(Akmaev & Fomichev, 1998)

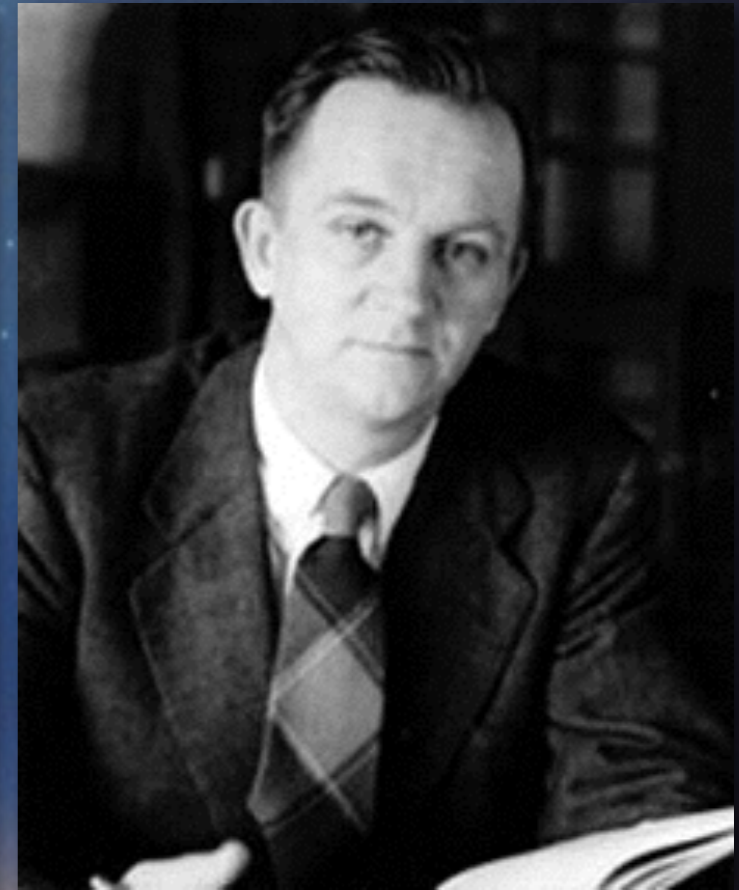
Ionosonde

Gregory Breit



(14 July 1899 - 11 September 1981)

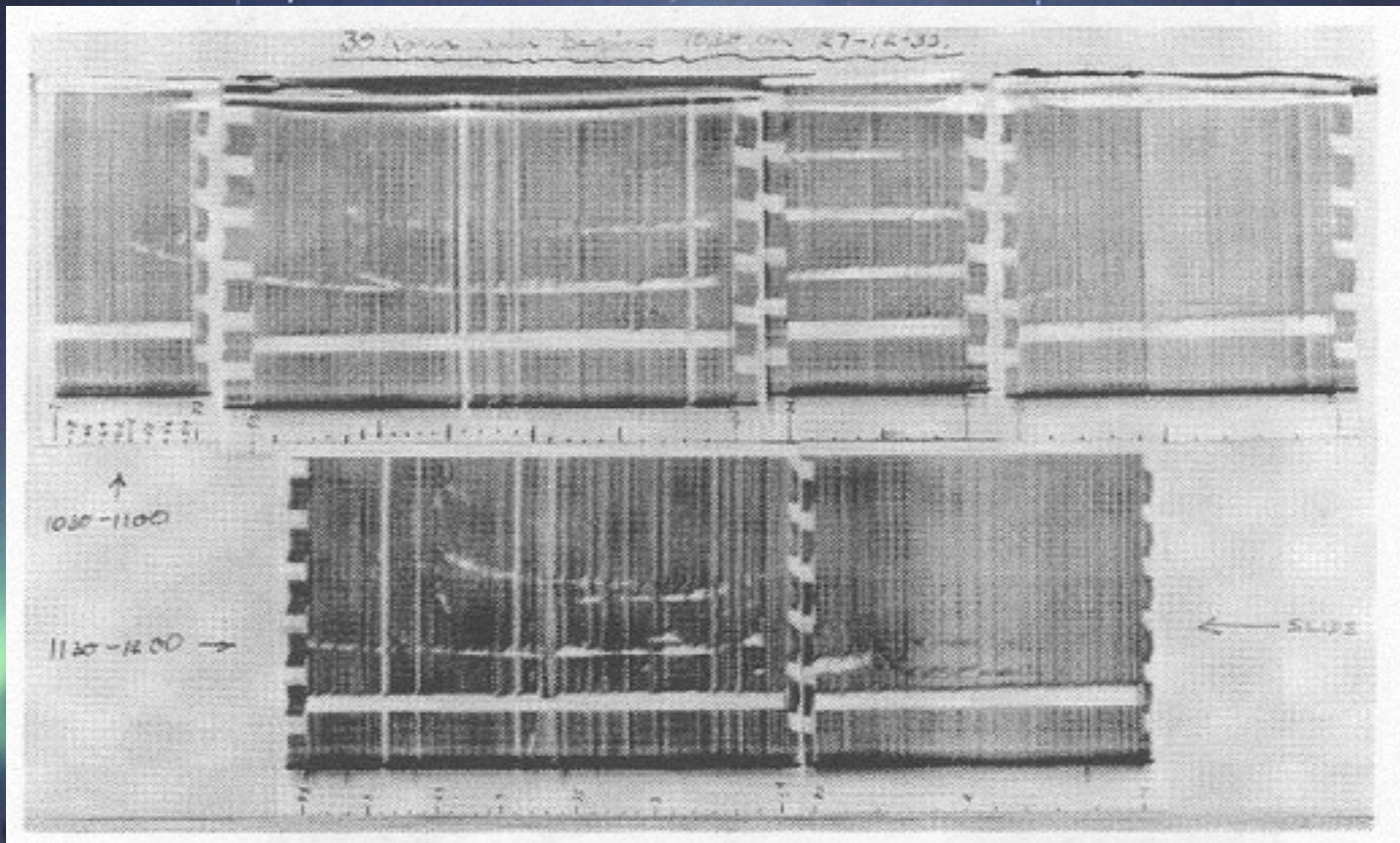
Merle Tuve



(27 June 1901 - 20 May 1982)

G Breit and M A Tuve,
A radio method of
estimating the height of
the conducting layer,
Nature, 116, p. 357, 1925.

Early Slough Ionogram



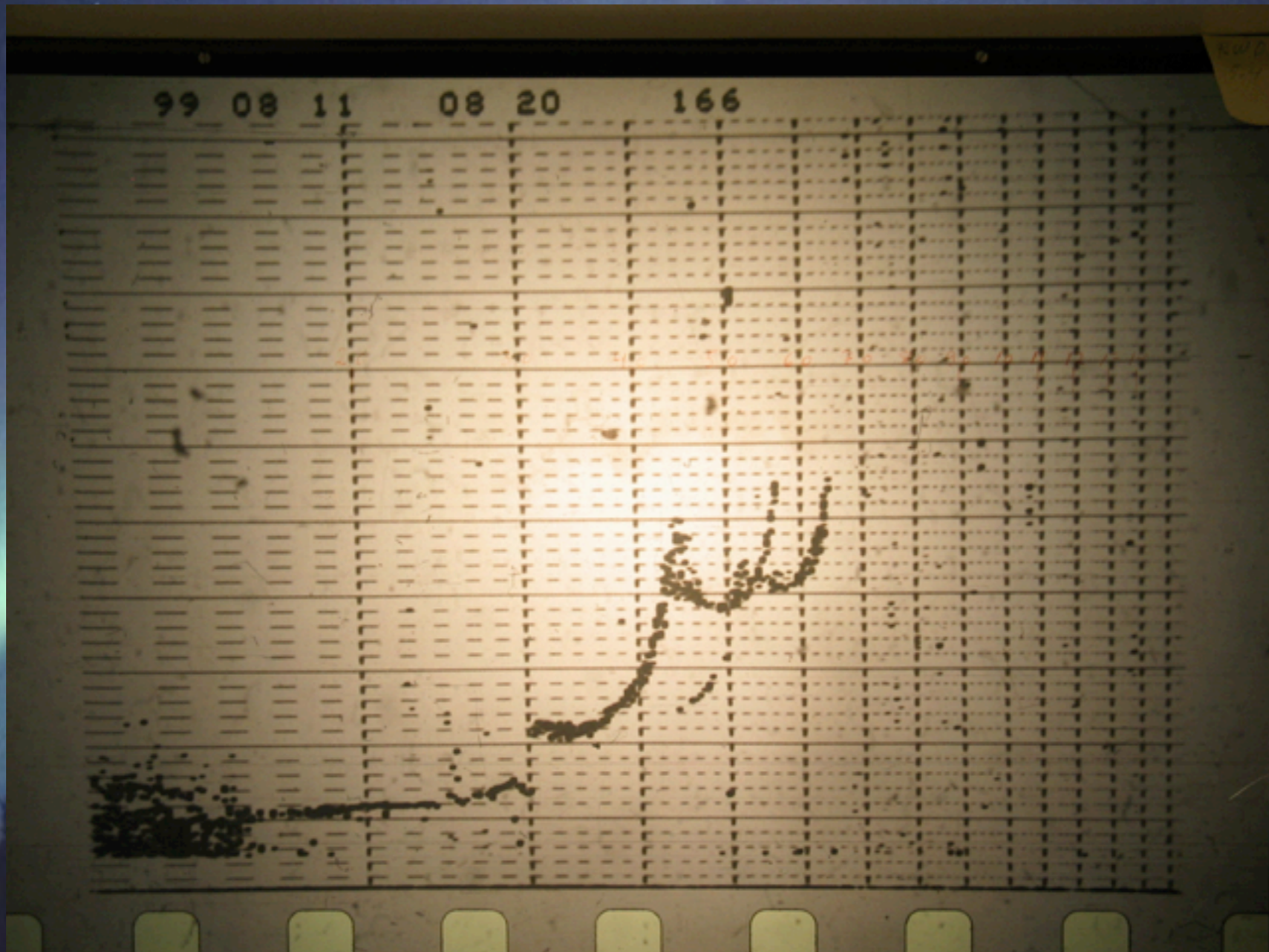
Radio Research Station Slough, Buckinghamshire
27th December 1933, 10:30-11:00 UTC and 11:30-12:00 UTC.

Sodankylä Ionosonde

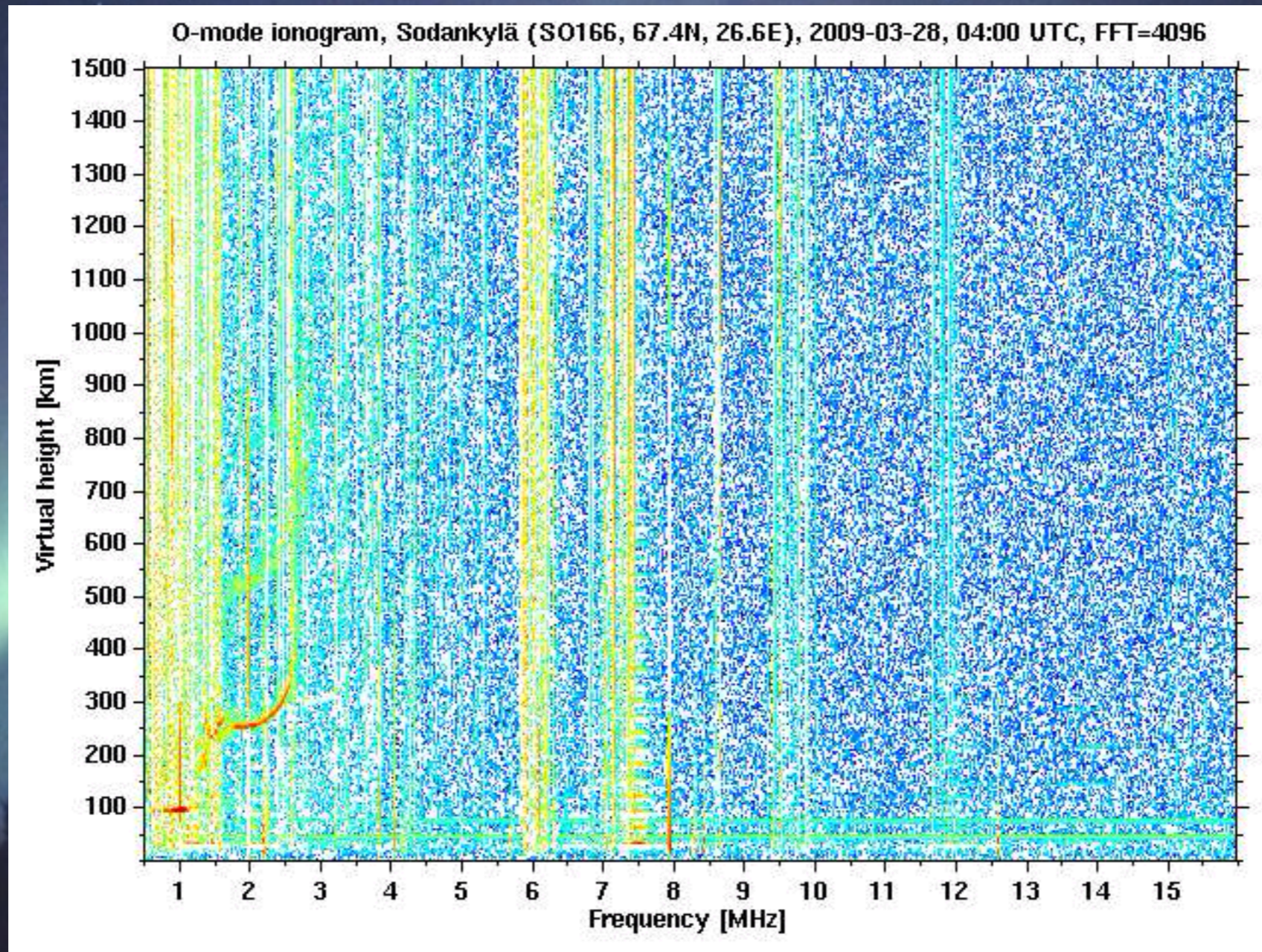
- Sodankylä ionosonde measurements began 1st August 1957.
- Until Nov 2005: 1 sounding per 30 min.
- Until Mar 2007: 1 sounding per 10 min.
- IPY (Apr '07-Mar '08): 1 sounding per minute.
- April 2008: we forgot to turn off IPY mode.
- Millionth ionogram: before May 2007.
- High data quality:
first 800.000+ ionograms were analysed by
the very same person!



Sodankylä Ionosonde



Sodankylä Ionosonde



Empirical hmF2 Formulae

Shimazaki [1955]

$$hpF2 = \frac{1490}{M} - 176$$

Bilitza, Sheikh, Eyfrig [1979]

$$hmF2 = \frac{1490}{M - \Delta M} - 176$$

$$\Delta M = \frac{F1 \times F4}{x - F2} + F3$$

$$F1 = 0.00232 \times R + 0.222$$

$$F2 = 1.2 - 0.016 \exp(0.0239 \times R)$$

$$F3 = 0.00064 \times (R - 25)$$

$$F4 = 1 - \frac{R}{150} \exp\left(\frac{-\Phi^2}{1600}\right)$$

Bradley, Dudeney [1973], eq. (3)

$$hmF2 = a \times M^b$$

$$a = 1890 - \frac{355}{x - 1.4}$$

$$b = (2.5x - 3)^{-2.35} - 1.6$$

Dudeney [1974], eq. (56)

$$hmF2 = \frac{1490(M \times F)}{M - \Delta M} - 176$$

$$\Delta M = \frac{0.253}{x - 1.215} - 0.012$$

$$(M \times F) = M \sqrt{\frac{0.0196M^2 + 1}{1.2967M^2 - 1}}$$

$$M = M(3000)F2$$

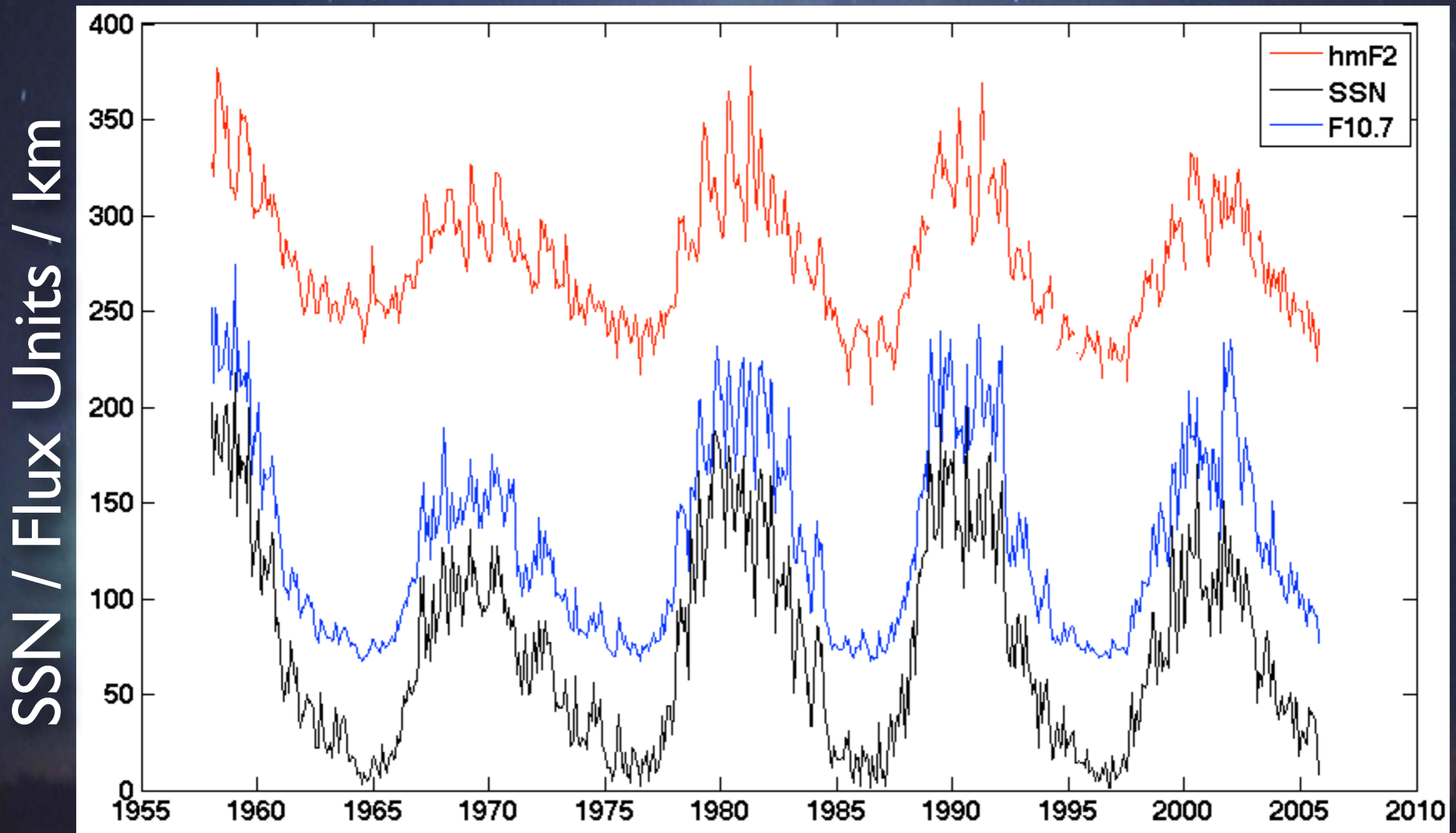
$$x = foF2 / foE$$

ΔM = Correction Term

Φ = Geomagnetic Latitude

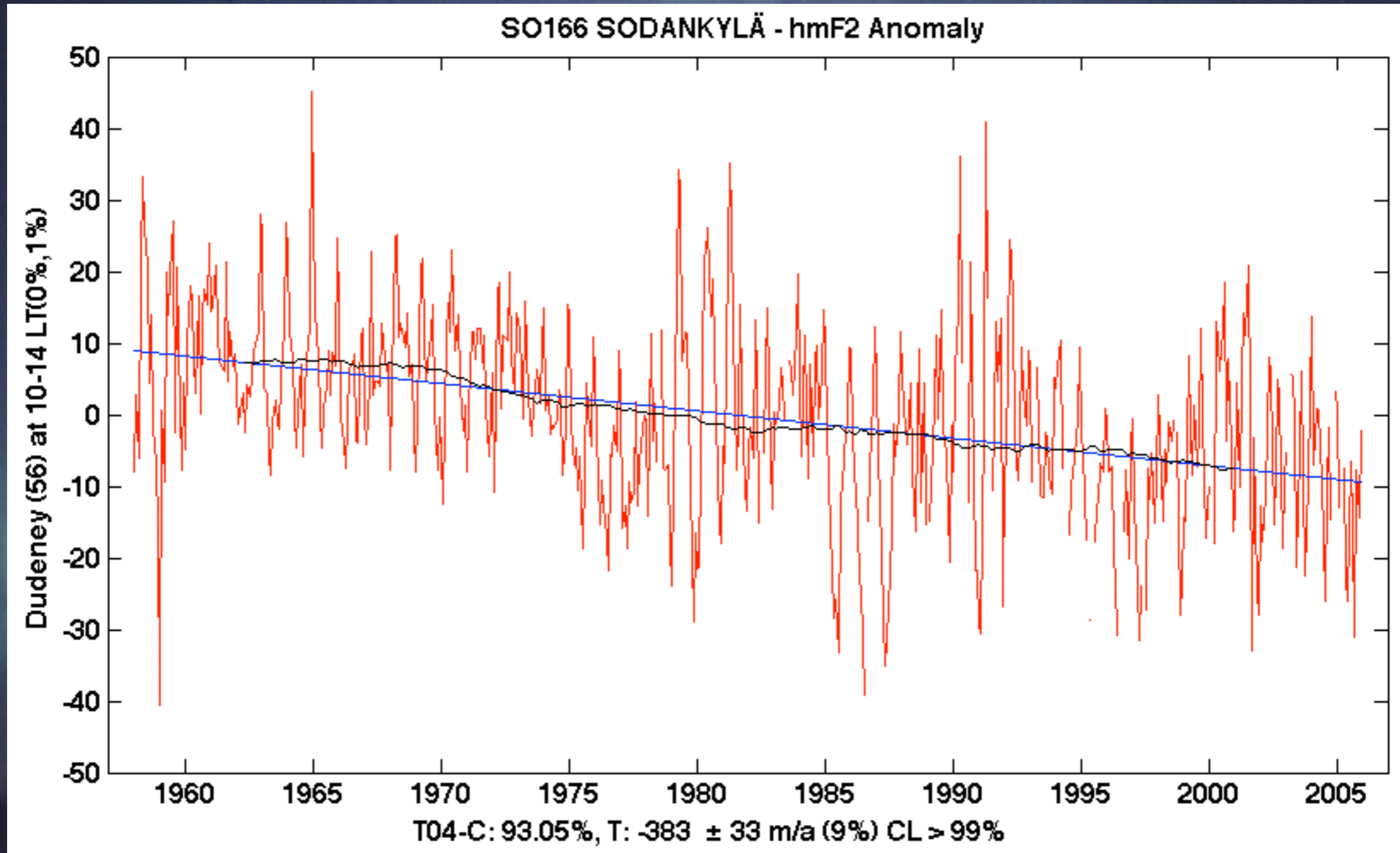
R = Sunspot Number

hmF2 & Solar Activity



Note: hmF2 computed using the empirical formula of Dudeney (eq. 56; 1974), which has been tested against true height at Sodankylä estimated during different periods of the time series using Titheridge's (1969) single-polynomial method.

Sodankylä hmF2 Trend

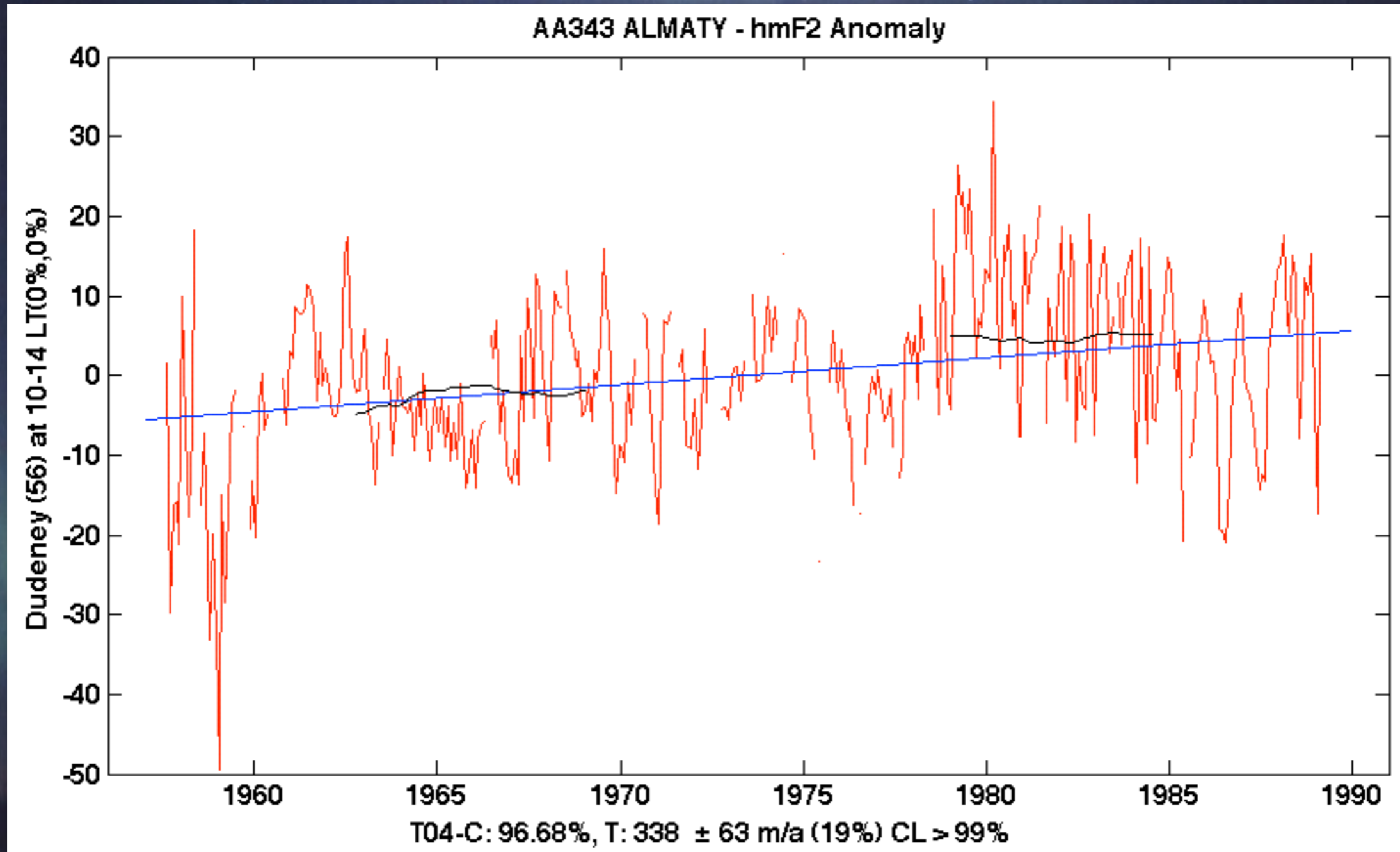


Conclusion

- The enhanced greenhouse effect is clearly visible in the ionosphere.

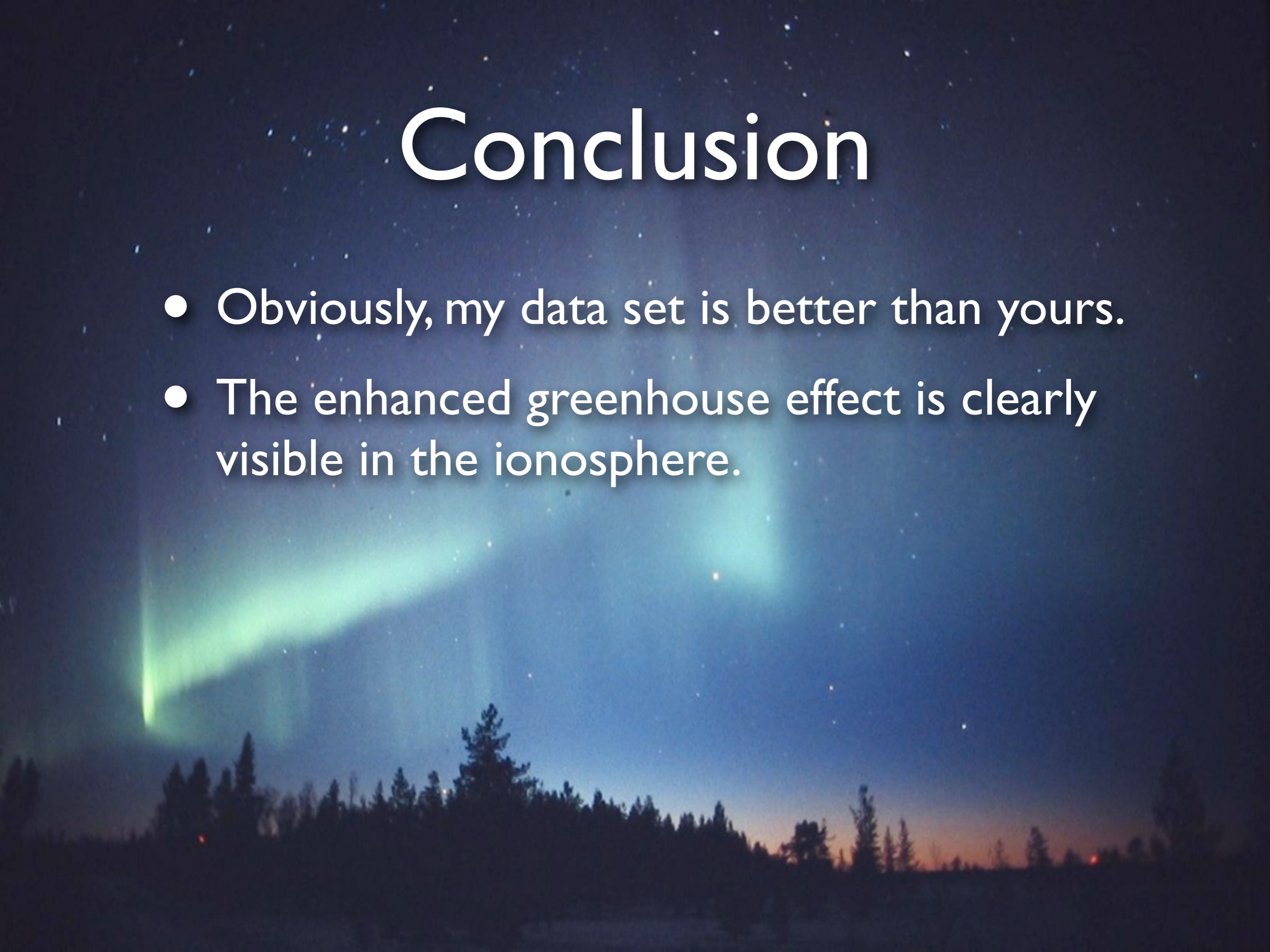


Almaty hmF2

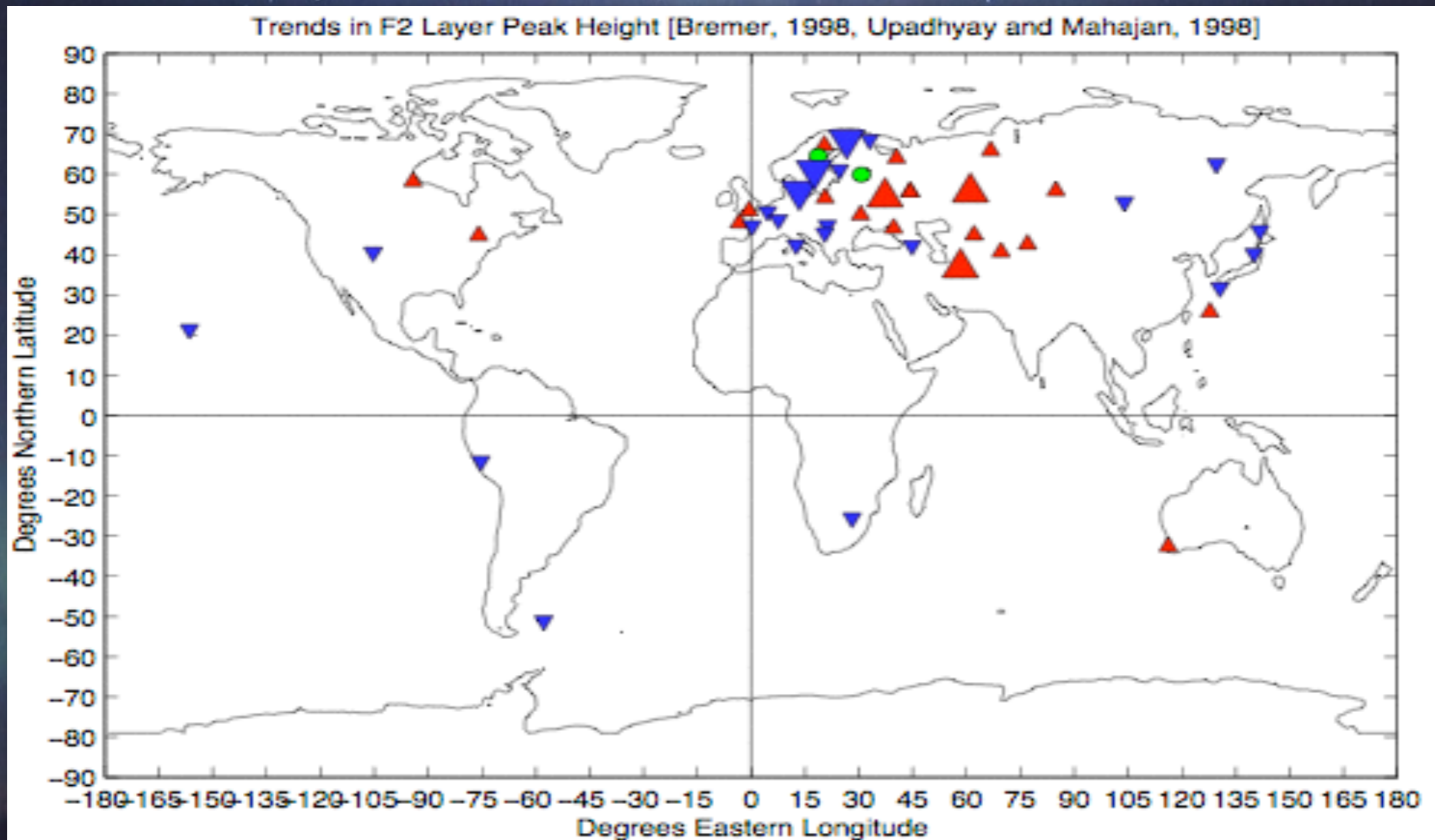


Conclusion

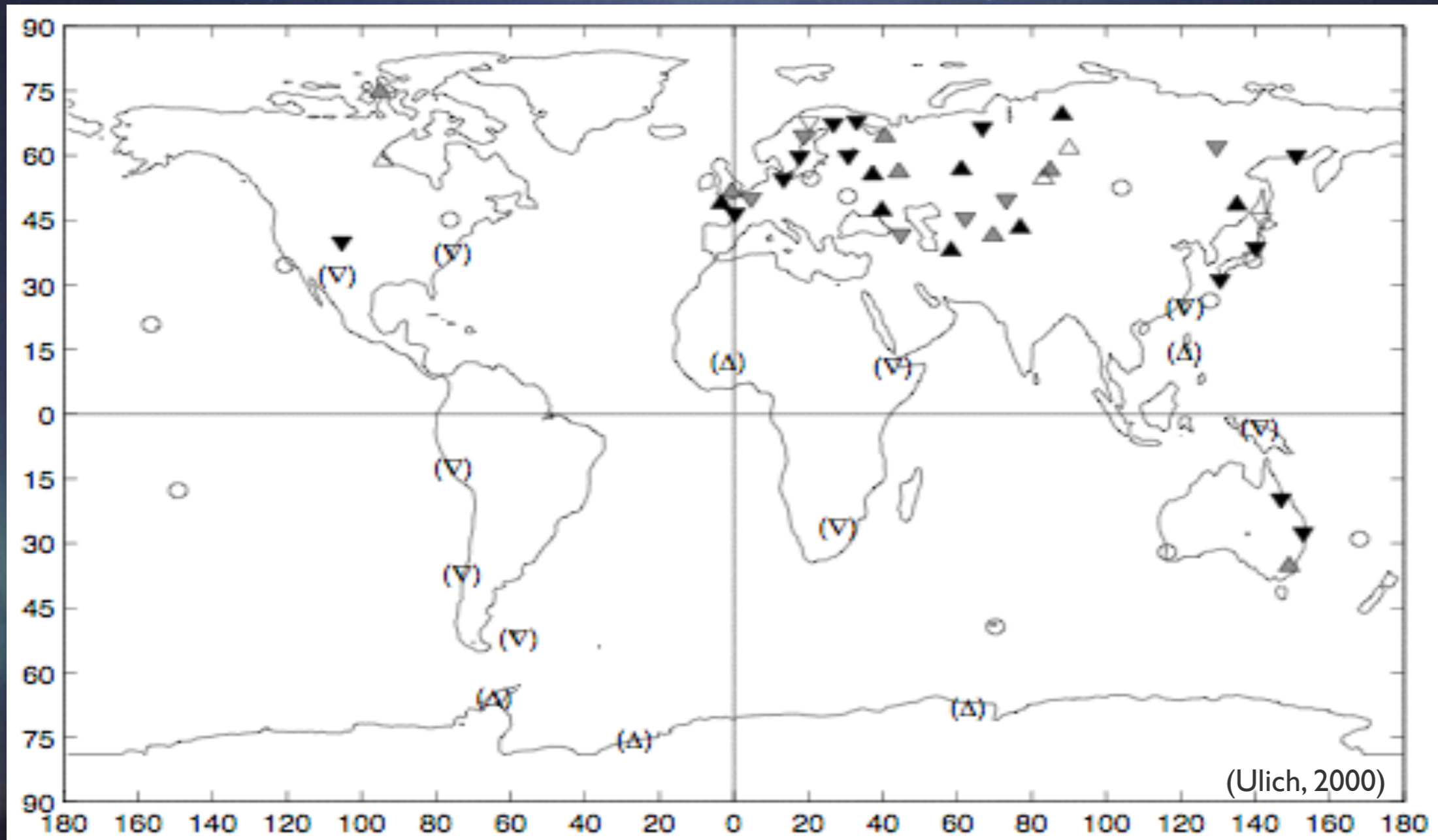
- Obviously, my data set is better than yours.
- The enhanced greenhouse effect is clearly visible in the ionosphere.



hmF2 Trends



Global hmF2 Trends



Conclusion

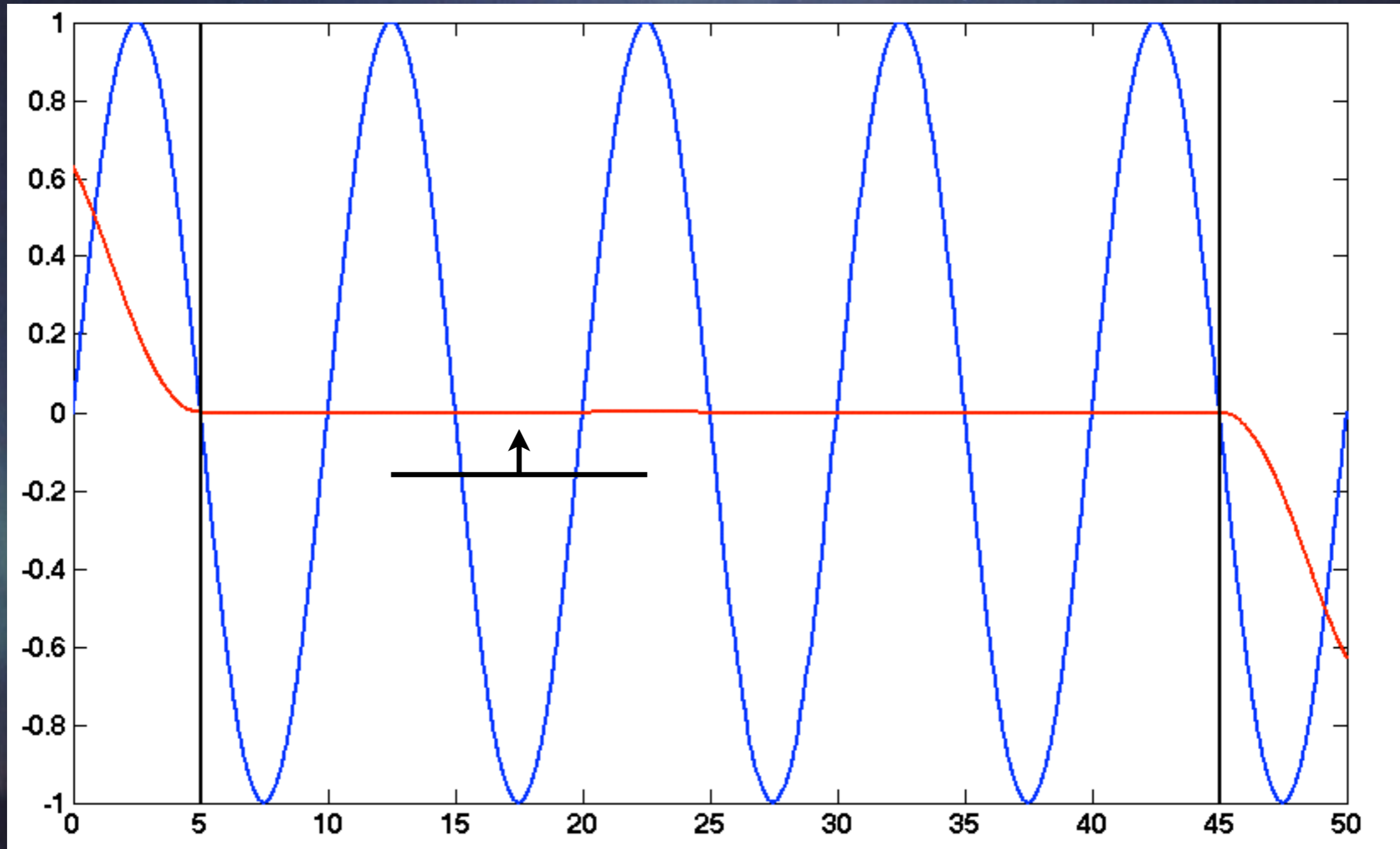
- What the ... ???



Problems

- Data resolution (h, 3-h, day, month(?), ...)
- Low-pass filtering or polynomial fitting...

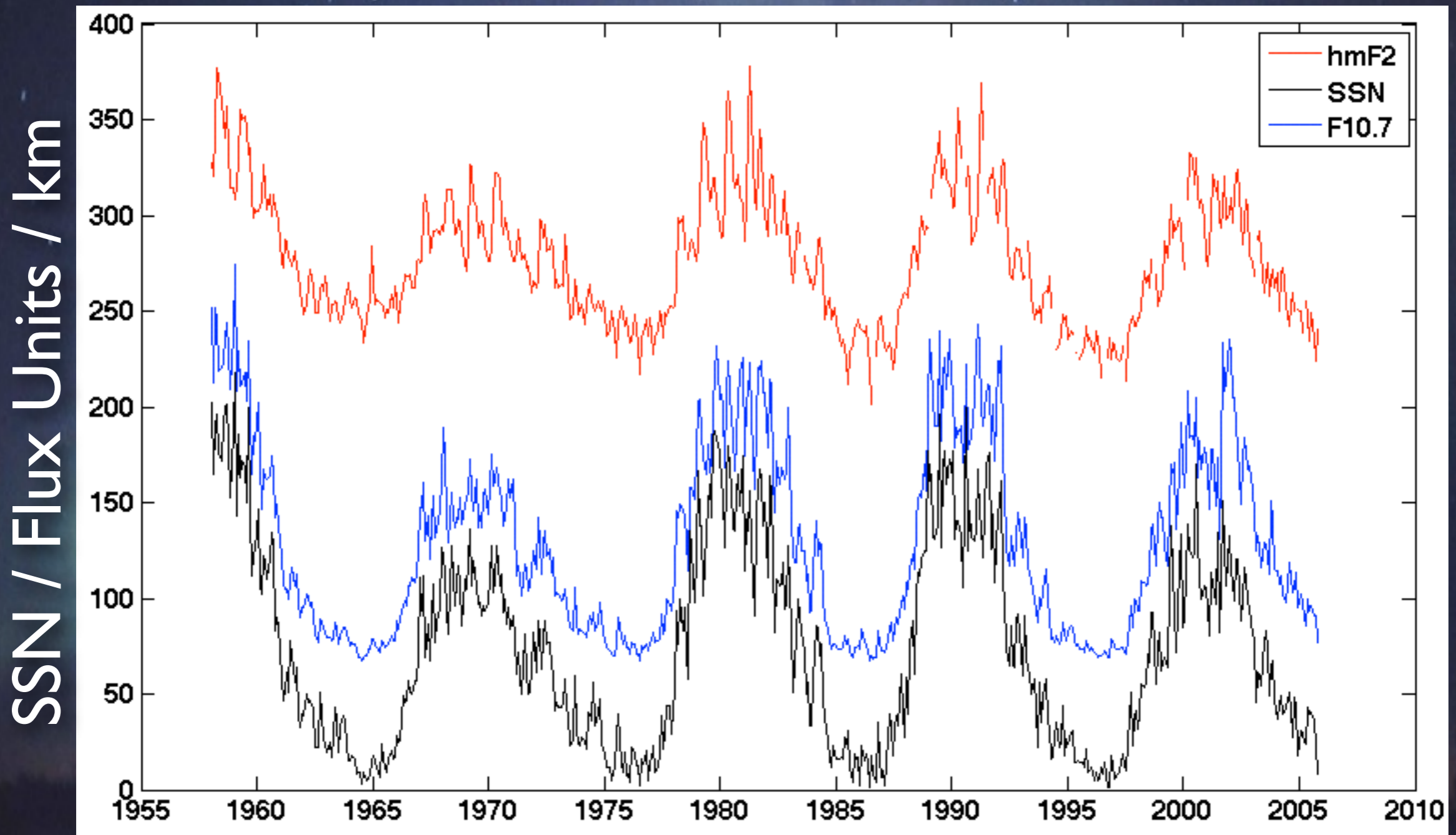
Running Mean Filter



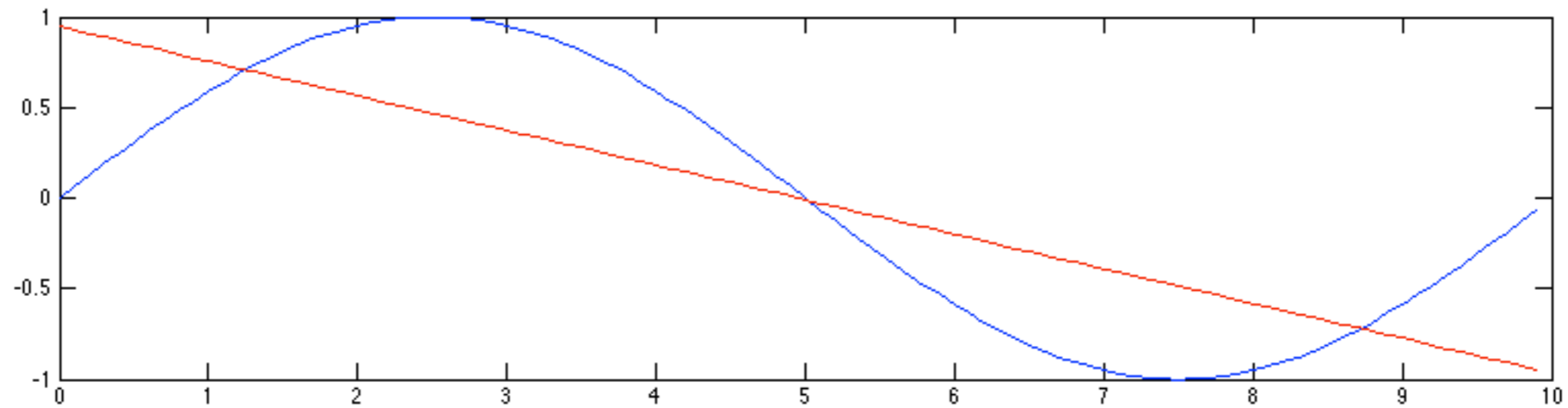
Problems

- Data resolution (h, 3-h, day, month(?), ...)
- Low-pass filtering or polynomial fitting...
- Removal of underlying (cyclic) variability:
 - Choice of proxy (sinusoid, SSN, Group SSN, F10.7 (adj./obs.), Ly- α , Mg II, E10.7, ...)
 - Resolution of proxy: compatibility with data

hmF2 & Solar Activity

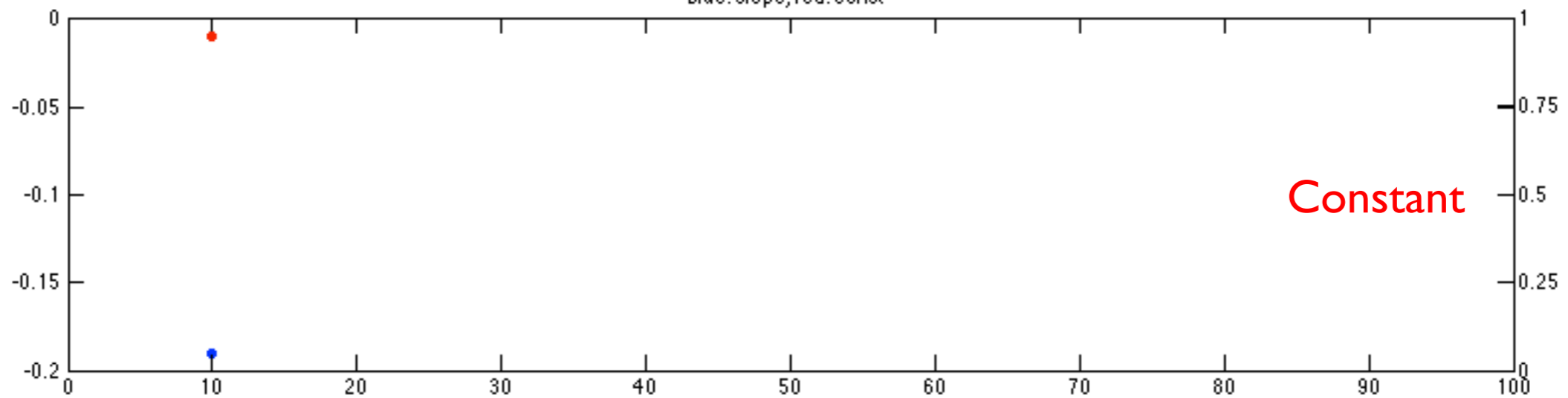


Ringing



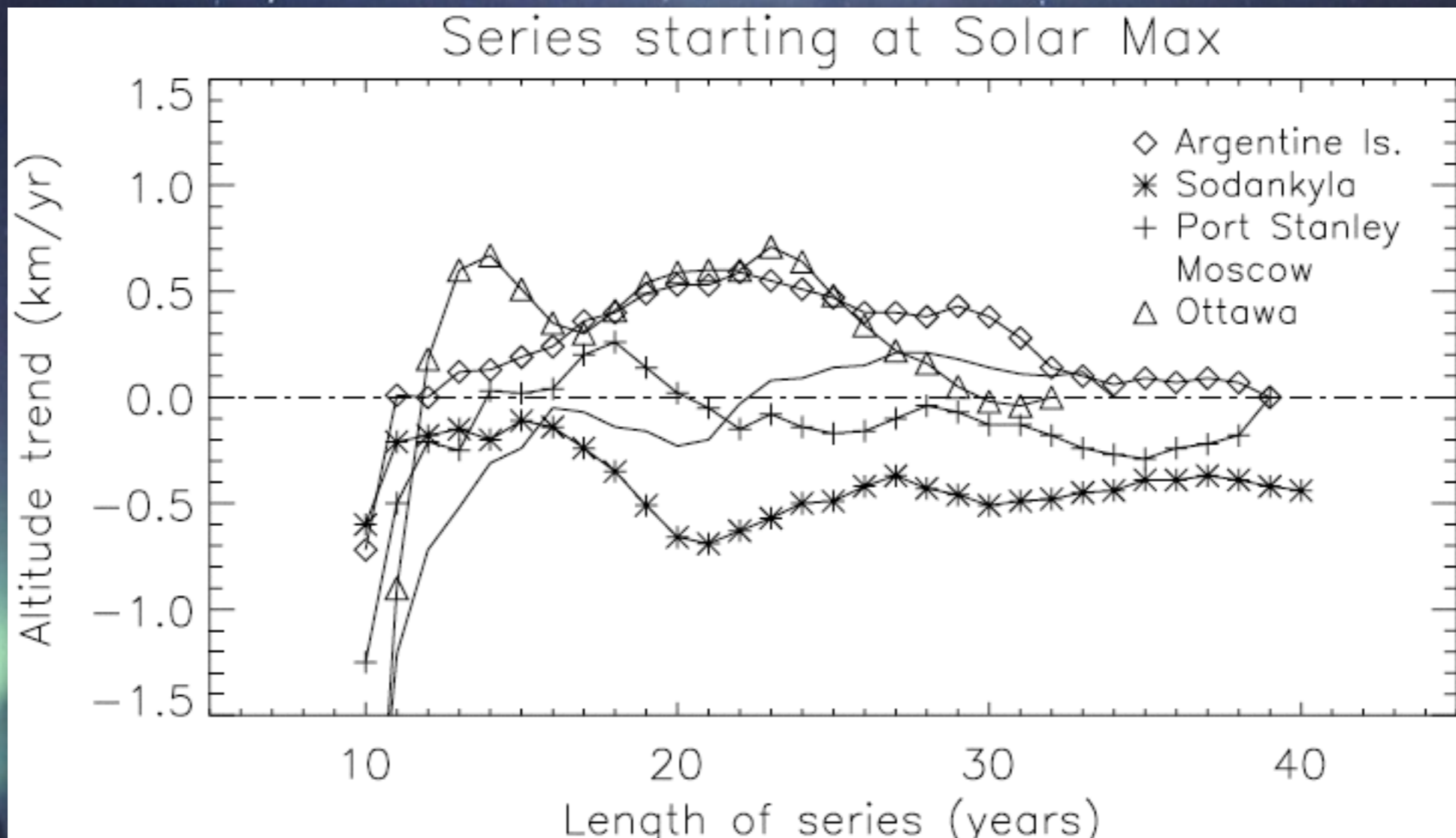
blue: slope; red: const

Trend



Constant

Ringing



The ringing idea was first introduced by Jarvis et al., 2002. The plots shown here are from a follow-up paper by Clilverd et al., 2003.

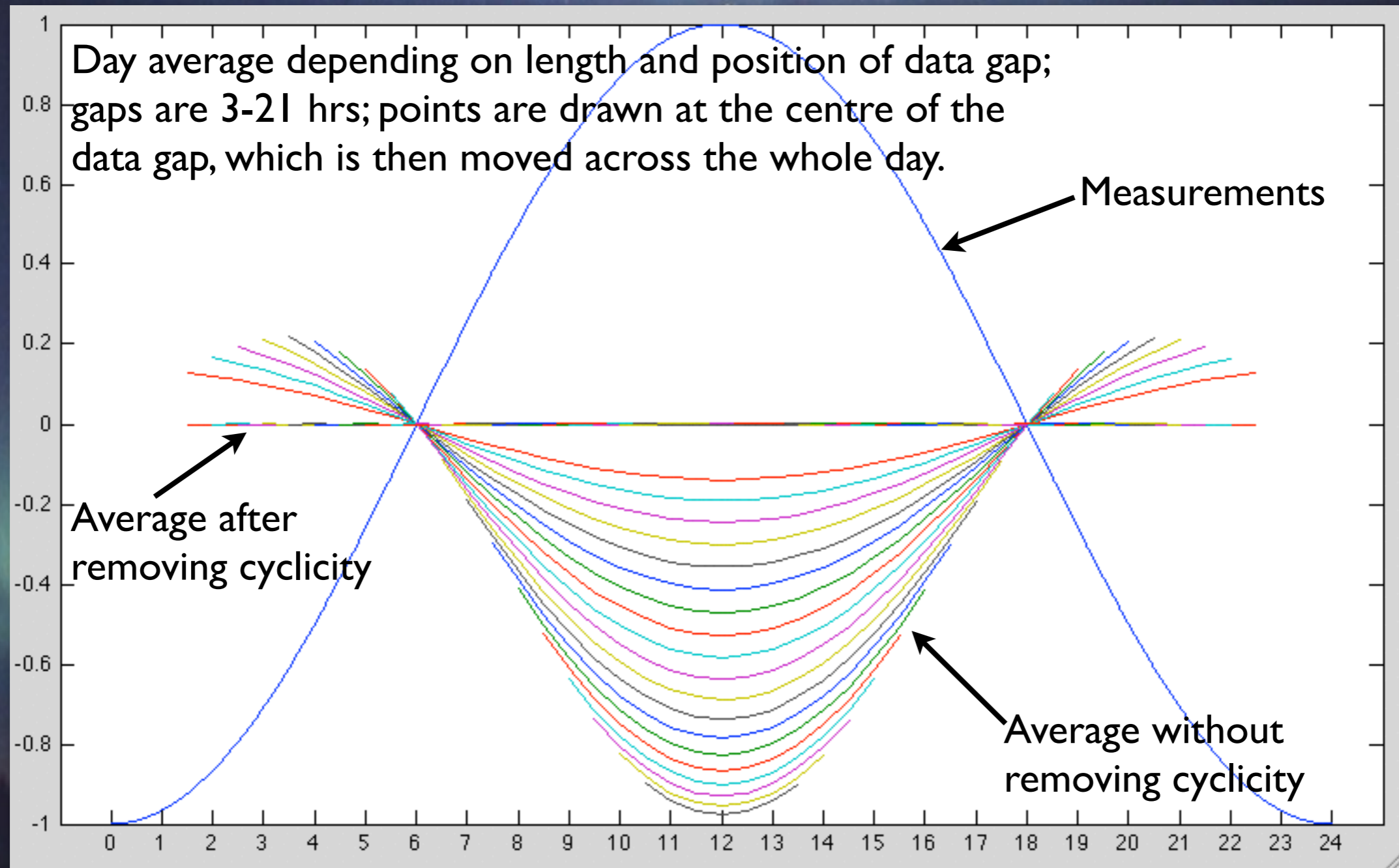
Problems

- Data resolution (h, 3-h, day, month(?), ...)
- Low-pass filtering or polynomial fitting...
- Removal of underlying (cyclic) variability: ...
- Data gaps

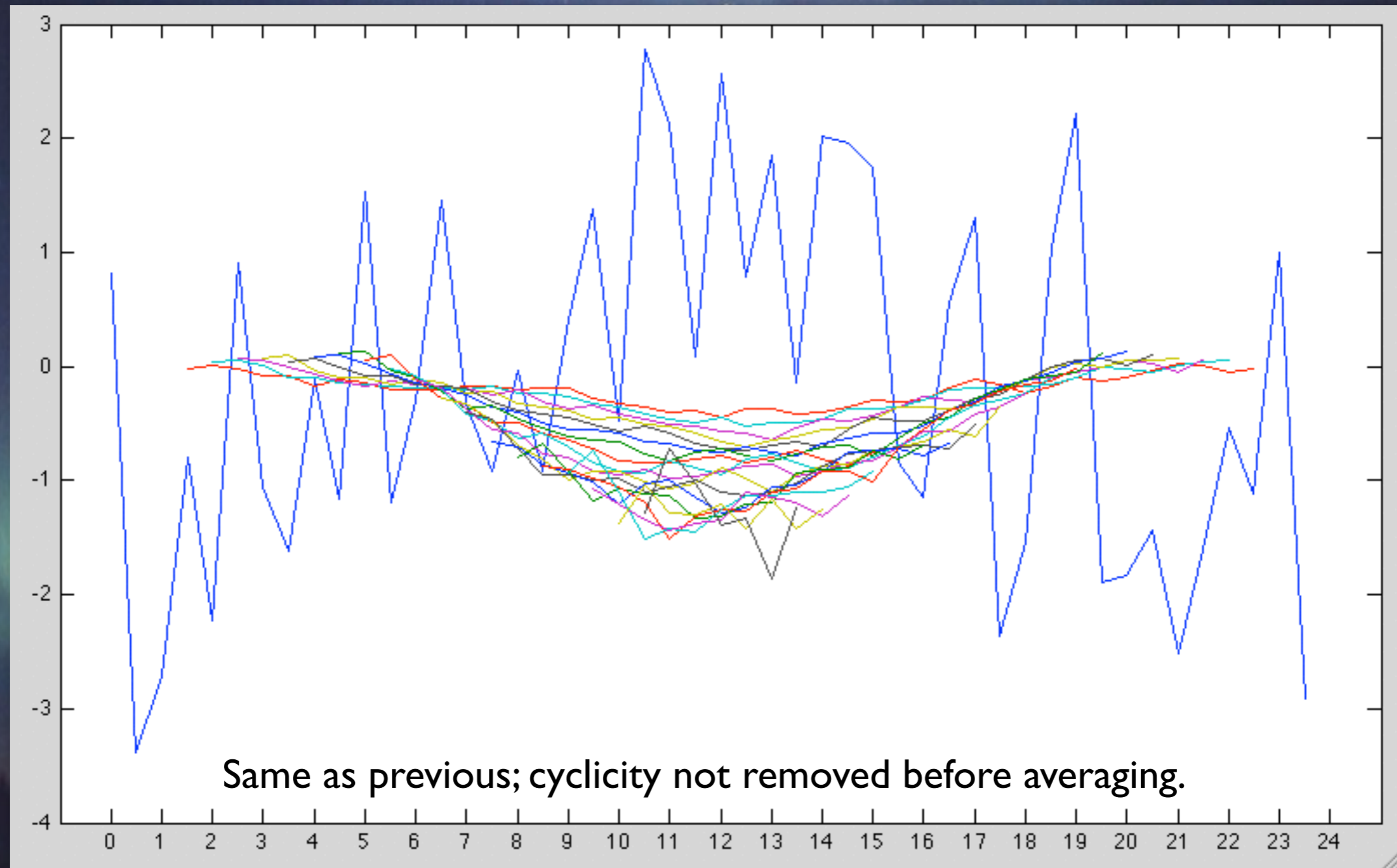
Example: Data Gaps



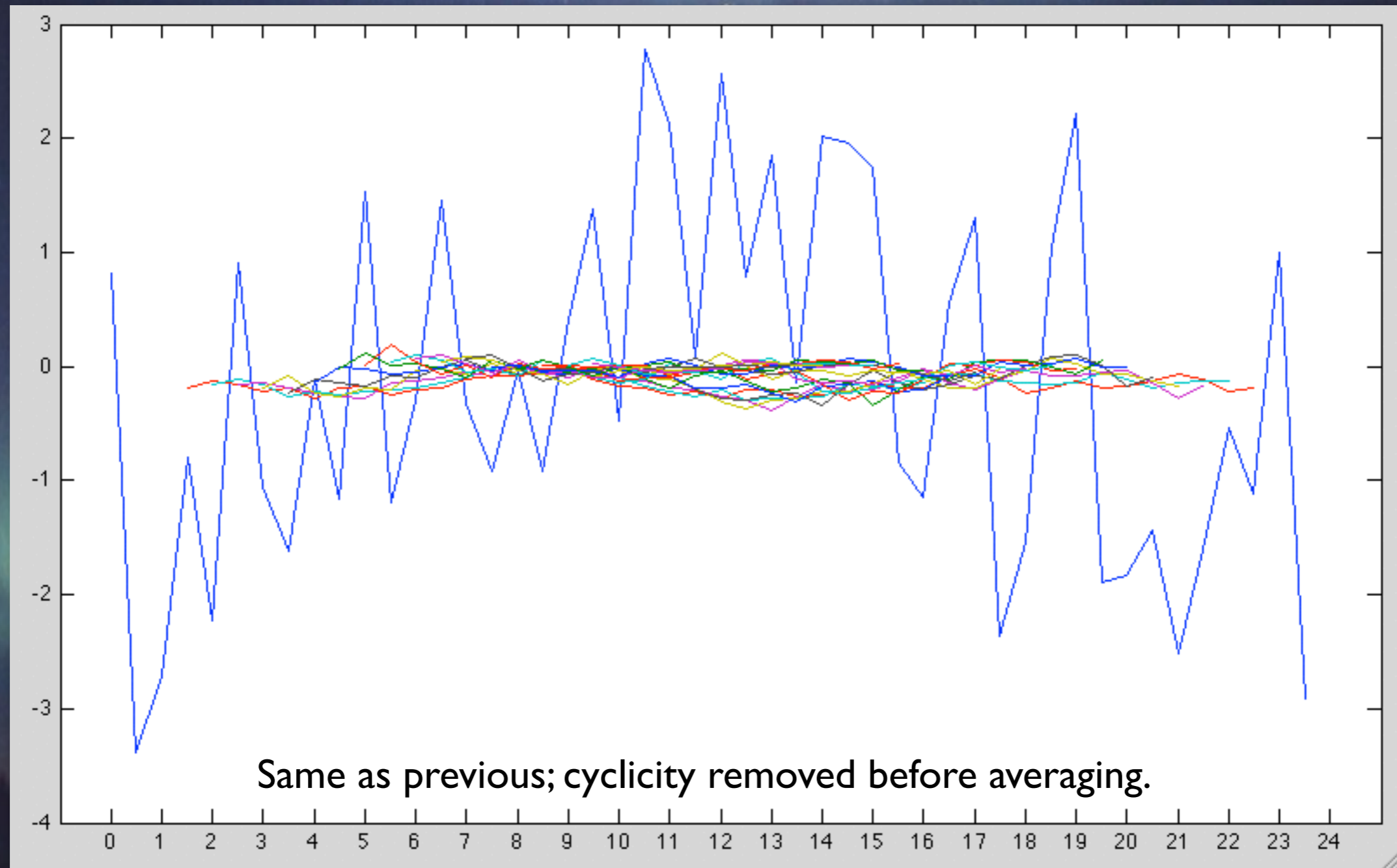
Data Gaps



Data Gaps



Data Gaps



Problems

- Data resolution (h, 3-h, day, month(?), ...)
- Low-pass filtering or polynomial fitting...
- Removal of underlying (cyclic) variability: ...
- Data gaps
- Measurement errors
- Mathematics of trend detection
 - stepwise or multi-parameter fit
 - error propagation

Making models

- Base functions of the model(s) are, e.g.:

$$\begin{aligned} m_i = & \varepsilon_i && \rightarrow \text{measurement errors} \\ & + x_1 && \rightarrow \text{constant} \\ & + x_2 t_i && \rightarrow \text{sampling times} \\ & + x_3 F_{10.7}(t_i) && \rightarrow \text{solar activity} \\ & + x_4 A_p(t_i) && \rightarrow \text{geomagnetic activity} \\ & + x_5 \sin(2\pi t_i) \\ & + x_6 \cos(2\pi t_i) && \rightarrow \text{annual variation} \\ & + x_7 \sin(4\pi t_i) \\ & + x_8 \cos(4\pi t_i) && \rightarrow \text{semi-annual variation} \\ & + \dots \end{aligned}$$

Modelling the data

The ionospheric property of interest is function of time and a number of other parameters. The model of the data is therefore

$$m(t) = \mathcal{F}(t, x_1, \dots, x_M)$$

where

$$\mathcal{F}(t, x_1, \dots, x_M) = \sum_{i=1}^M x_i f_i(t)$$

The actual measurements m_i observed at time t_i are equal to the model plus some measurement error ε_i

$$m_i = \mathcal{F}(t_i, x_1, \dots, x_M) + \varepsilon_i$$

Inverse problem I

This can be expressed as a matrix equation. Usually there are many more data points than unknowns x_i and the problem is over-determined:

$$\begin{pmatrix} m_1 \\ m_2 \\ \vdots \\ m_N \end{pmatrix} = \begin{pmatrix} f_1(t_1) & f_2(t_1) & \cdots & f_M(t_1) \\ f_1(t_2) & f_2(t_2) & \cdots & f_M(t_2) \\ \vdots & \vdots & \ddots & \vdots \\ f_1(t_N) & f_2(t_N) & \cdots & f_M(t_N) \end{pmatrix} \cdot \begin{pmatrix} x_1 \\ x_2 \\ \vdots \\ x_M \end{pmatrix} + \begin{pmatrix} \varepsilon_1 \\ \varepsilon_2 \\ \vdots \\ \varepsilon_N \end{pmatrix}$$

In other words:

$$\mathbf{m} = \mathbf{A} \cdot \mathbf{x} + \boldsymbol{\varepsilon}$$

Inverse problem II

Measurements and theory are weighted by the measurement errors:

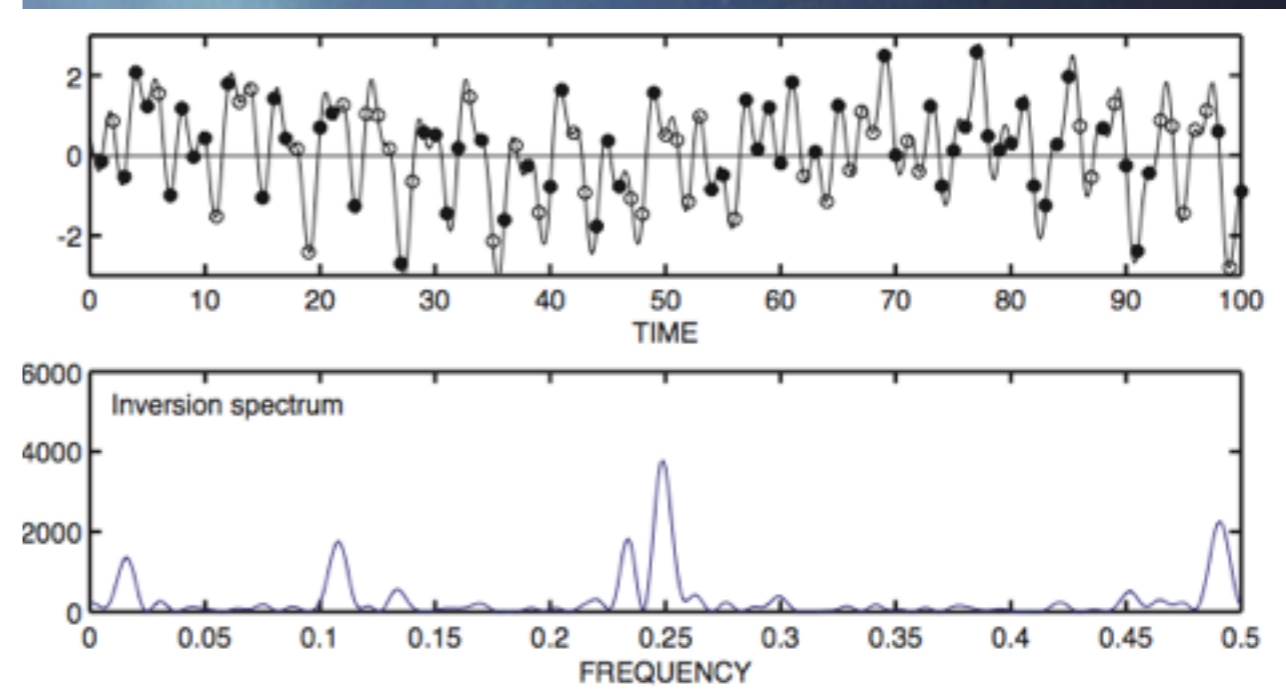
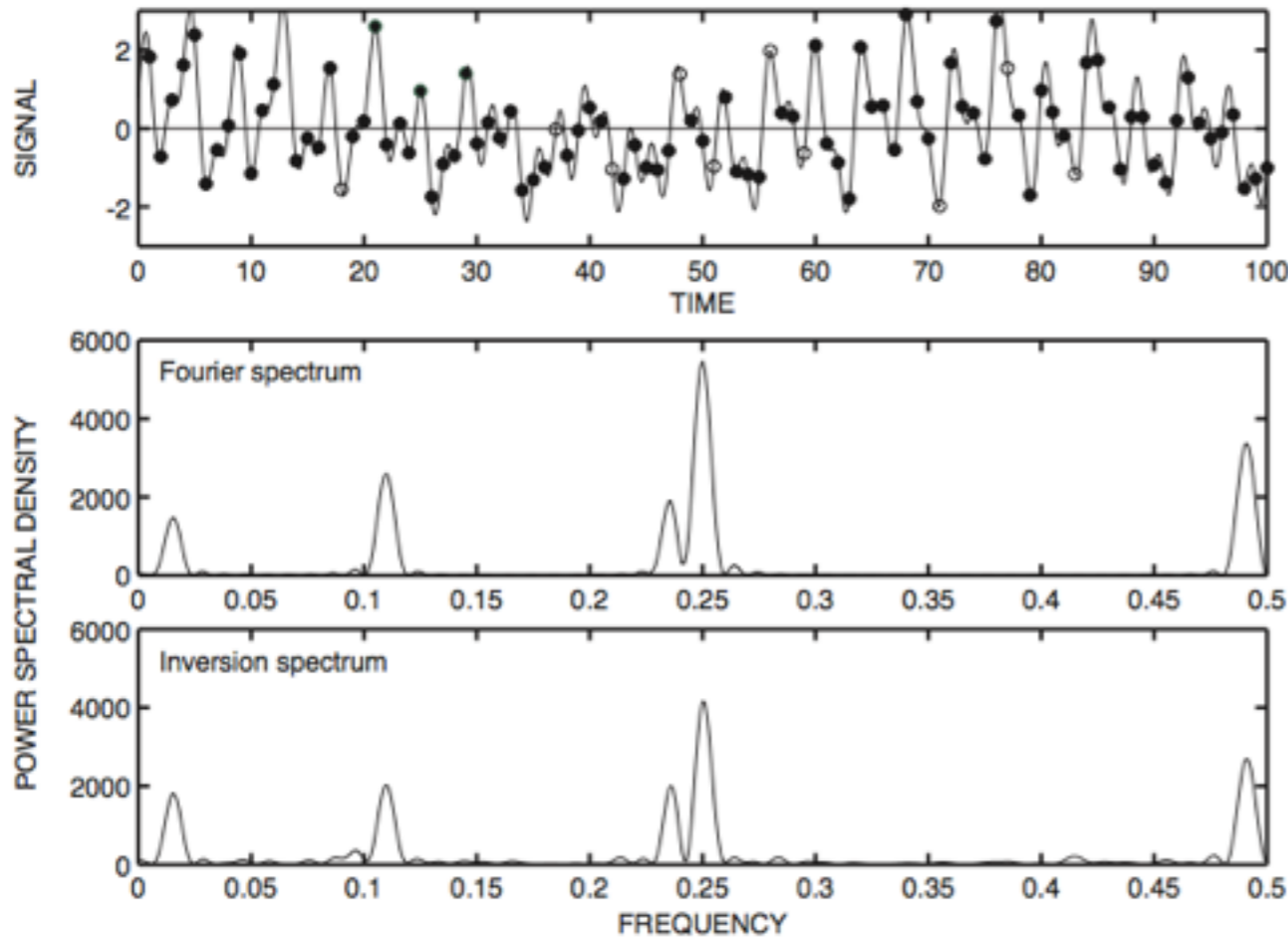
$$B_{ij} := \frac{A_{ij}}{\varepsilon_i} \quad \text{and} \quad b_i := \frac{m_i}{\varepsilon_i}$$

The solution is the vector \mathbf{x} , which minimises the following expression:

$$\chi^2 = |\mathbf{B} \cdot \mathbf{x} - \mathbf{b}|^2$$

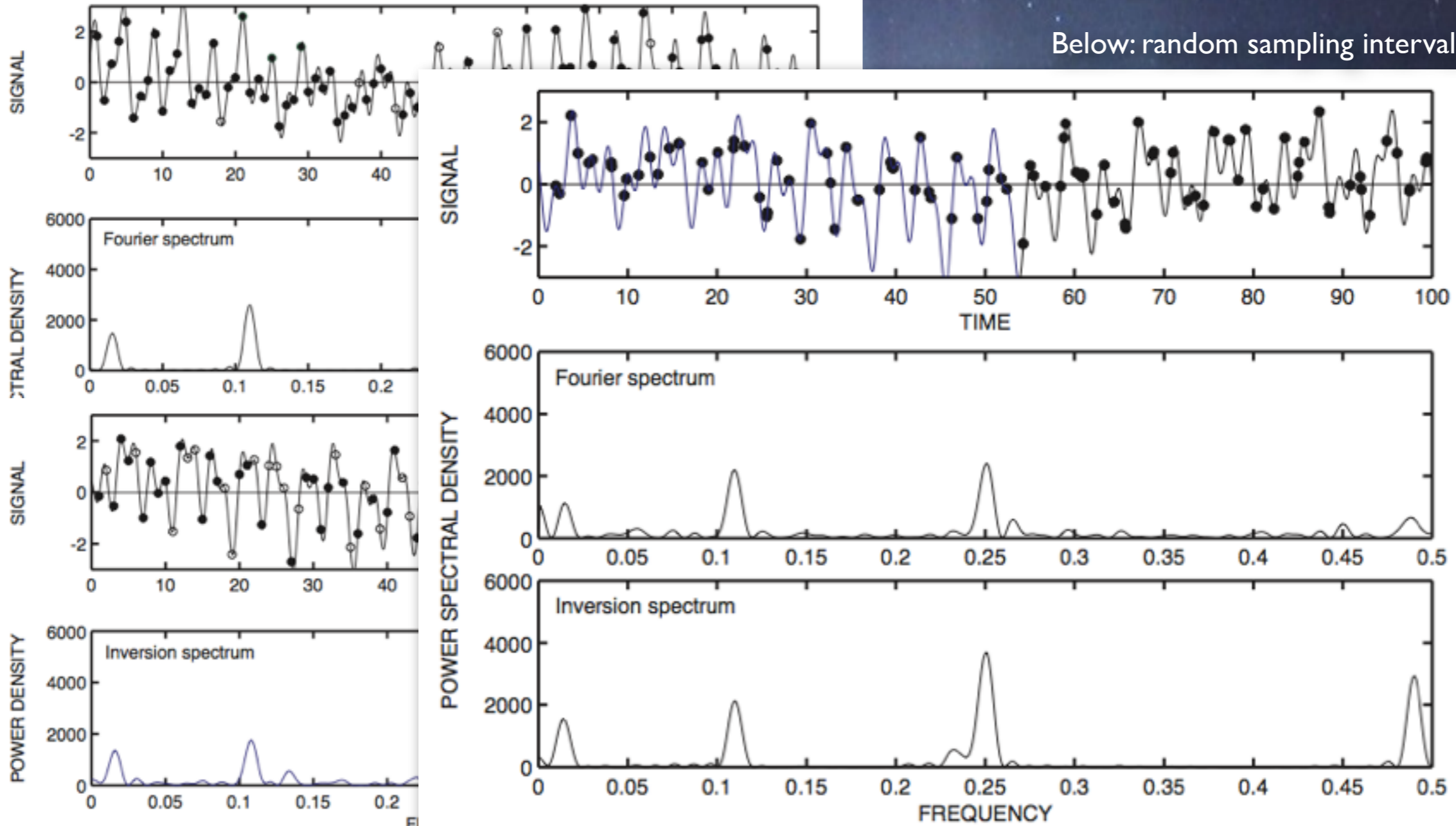
We are left with a general least squares problem. Solving this results in the most probable solution for \mathbf{x} .

Signal Spectrum by Stochastic Inversion



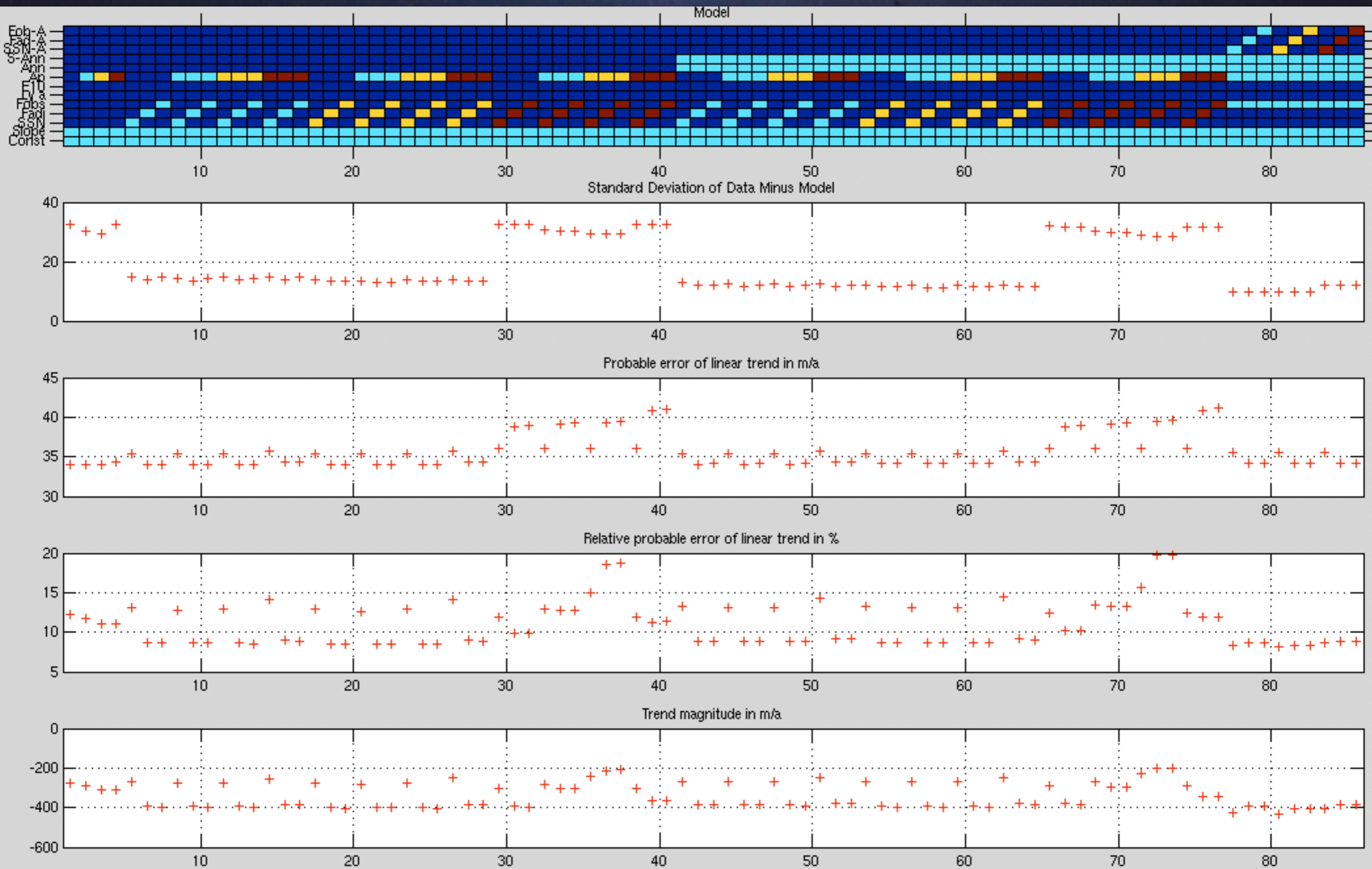
Left: 100 pts for Fourier, 90 for inversion.
Above: 59 pts.

Signal Spectrum by Stochastic Inversion

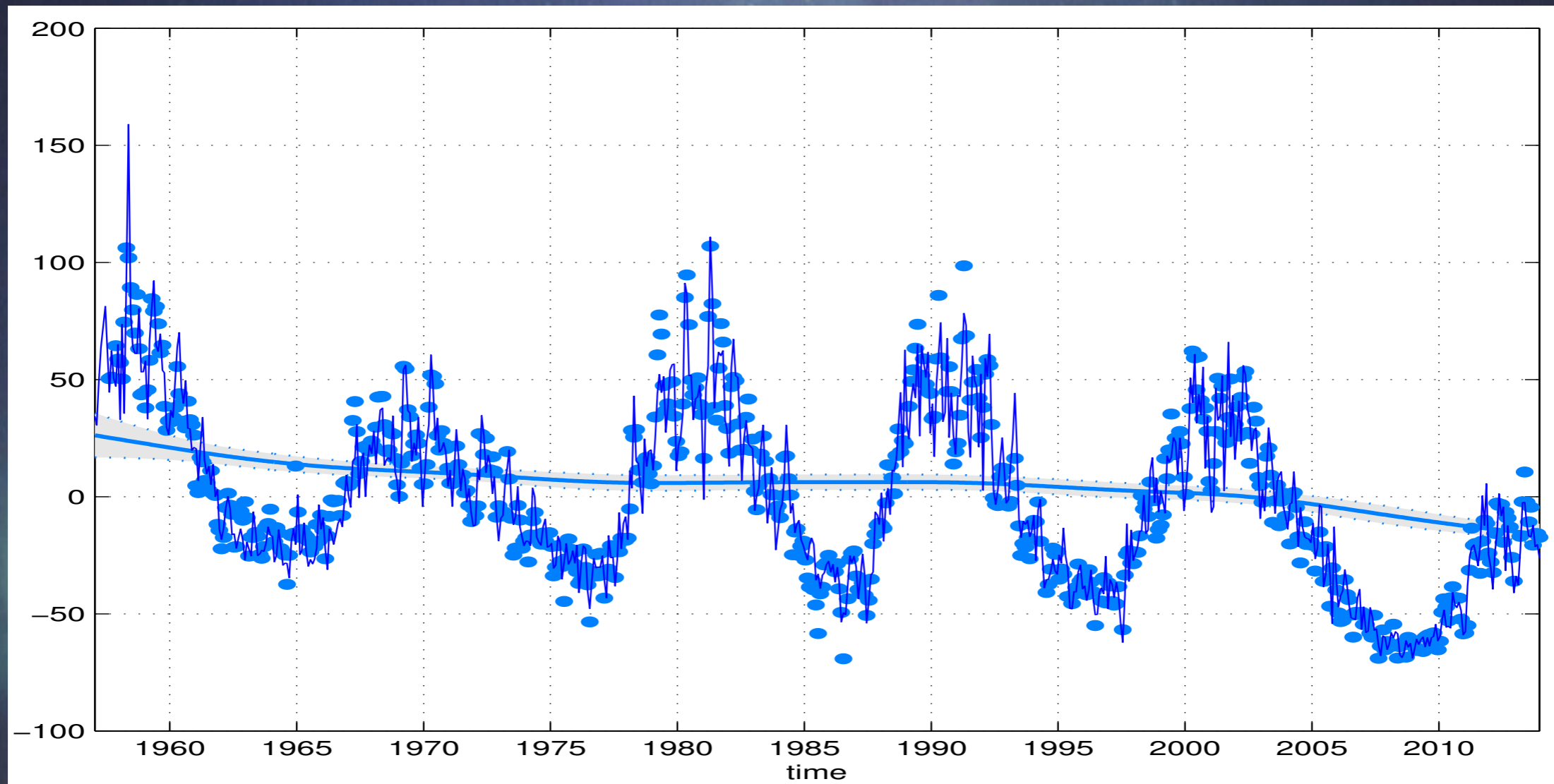


T. Nygrén and Th.Ulich, Calculation of signal spectrum by means of stochastic inversion, Ann. Geophys., 28, 1409-1418, 2010.

Sodankylä F2-layer peak height hmF2



Dynamic Linear Model



New approach using a dynamic linear model based on constant, trend, annual & semi-annual wave, as well as F10.7cm radio fluxes. Here, hmF2 is based on the same Dudeney (1974) computation as earlier plots.
(Roininen, Ulich, and Laine, Cambridge (UK) Trend Workshop 2014)

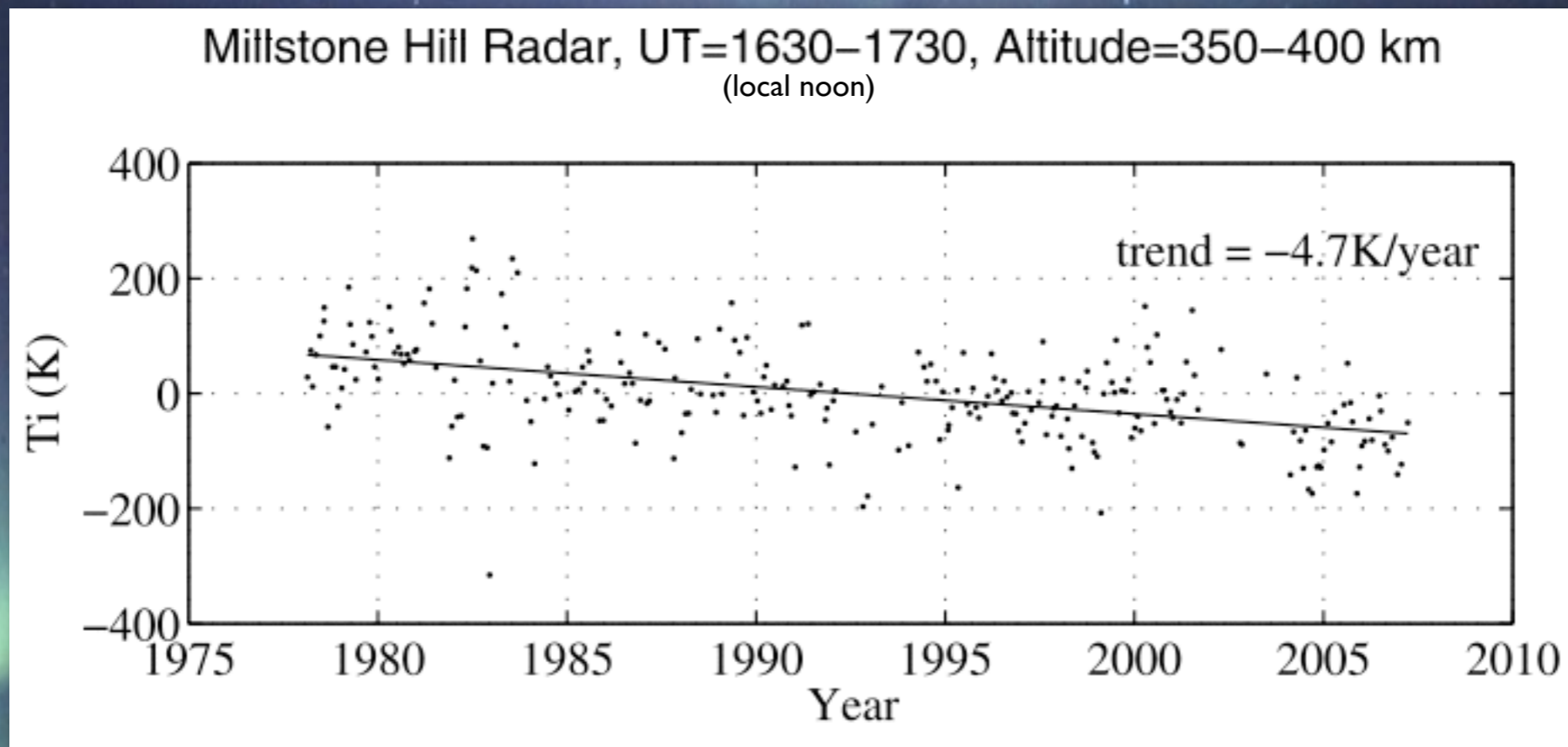
Conclusion

- This is pointless?
I don't think so...
...yet!

Trends in other Observations

Height in km	Method	Parameter	Trend per Year	Reference
75	Sounding rocket	Temperature	-0.6 K	Kokin and Lysenko, 1994
70	Sounding rocket	Temperature	-0.7 K	Golitsyn et al., 1996
60-70	Lidar	Temperature	-0.4 K	Hauchecorne et al., 1991
60	Sounding rocket	Temperature	-0.4 K	Golitsyn et al., 1996
60	Sounding rocket	Temperature	-0.33 K	Keckhut et al., 1999
50-60	Lidar	Temperature	-0.25 K	Aikin et al., 1991
50	Sounding rocket	Temperature	-0.25 K	Golitsyn et al., 1996
40	Sounding rocket	Temperature	-0.1 K	Golitsyn et al., 1996
30-60	Sounding rocket	Temperature	-0.17 K	Dunkerton et al., 1998
30-50	Sounding rocket	Temperature	-0.17 K	Keckhut et al., 1999
30	Sounding rocket	Temperature	-0.1 K	Golitsyn et al., 1996
25	Sounding rocket	Temperature	-0.1 K	Golitsyn et al., 1996
25	Sounding rocket	Temperature	-0.11 K	Keckhut et al., 1999

Direct F-Region Temperature



Long-term temperature trends in the ionosphere above Millstone Hill

J. M. Holt¹ and S. R. Zhang¹

GEOPHYSICAL RESEARCH LETTERS, VOL. 35, L05813, doi:10.1029/2007GL031148, 2008

Conclusion

(the last one, I promise!)

- Definitely, there's long-term change in the ionosphere and thermosphere!
- The enhanced greenhouse effect is probably a part of it.
- Other (unknown?) processes are involved.
- Solution in modelling?
- We don't understand what's going on.
- Student exercise: Find out!

Conclusion

(I lied to you!)

Ionosondes, originally deployed for monitoring ionospheric conditions for HF radio communication and for studying short-term events, are becoming useful in an environmental context.

They provide long-term measurements of our environment!

Do not discontinue atmospheric observations at a time of climate change!



KIITOS!